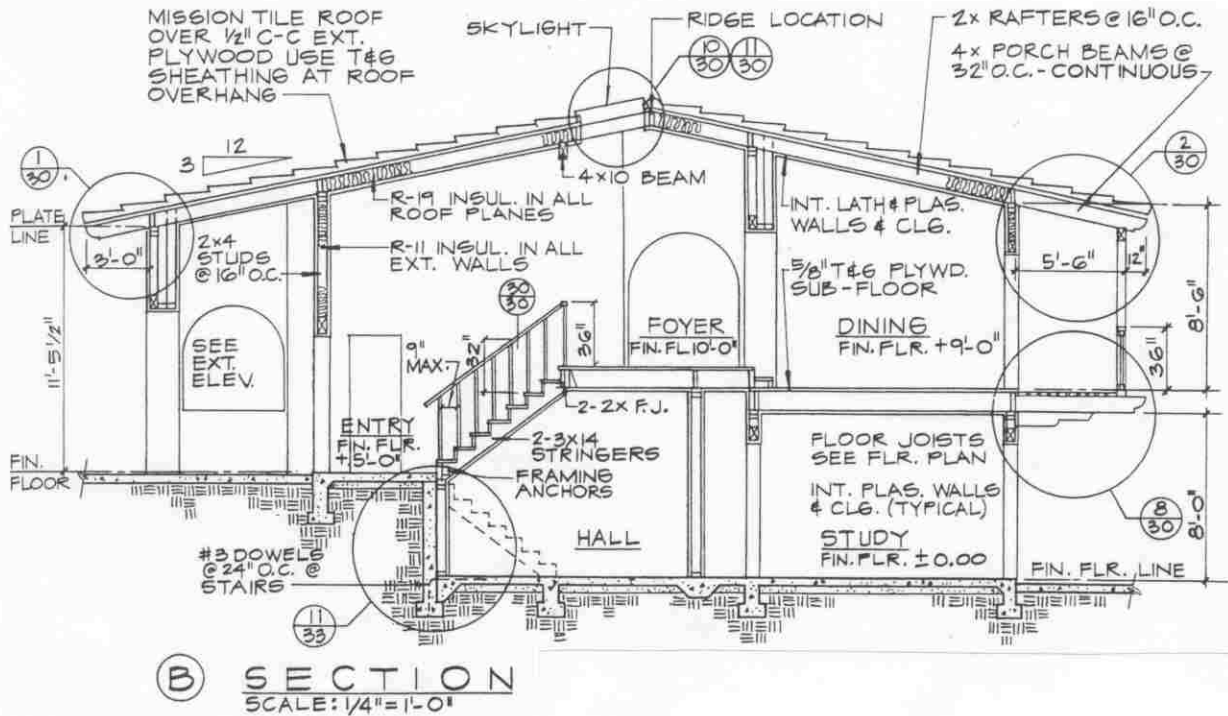
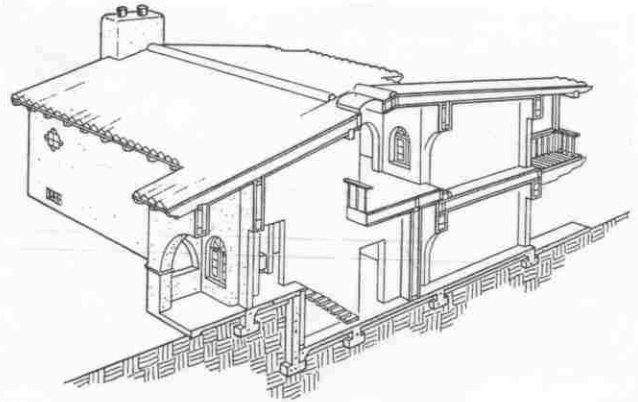
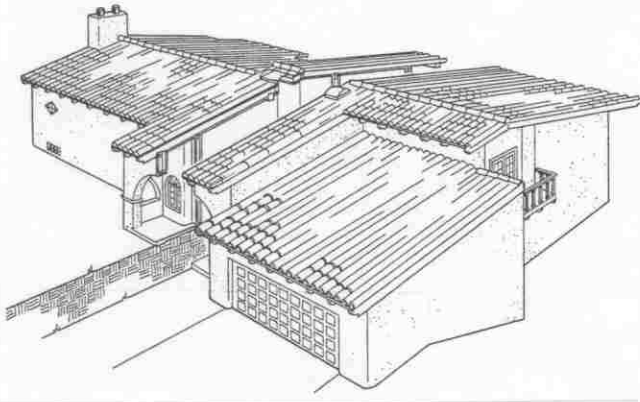


## BUILDING SECTIONS

A VERTICAL SLICE THROUGH A STRUCTURE IN ORDER TO SHOW:

- RELATIONSHIPS OF STRUCTURE ELEMENTS
- RELATIONSHIPS OF STRUCTURE ELEMENTS
- KEYS TO MORE DETAILED SECTIONS



### PLACEMENT

AS MANY AS PRACTICABLE IN ORDER TO CONVEY LOCATED AT THE MOST COMPLEX AREA IN STRUCTURE THE MOST AMOUNT OF INFORMATION.

BUILDING SECTIONS ARE LESS DETAILED YET STILL DRAWN ACCURATELY AND CORRECTLY.

USUALLY SAME SCALE AS FLOOR PLAN.

UNIVERSITY OF TOLEDO  
ENGINEERING TECHNOLOGY DEPT.  
ARCT-1100 ARCHITECT. GRAPHICS

**BUILDING  
SECTIONS**

SEMESTER: \_\_\_\_\_

CLASS HANDOUT: \_\_\_\_\_

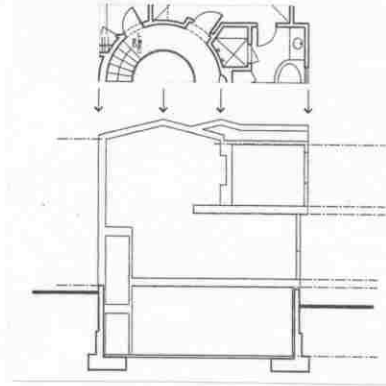
**BS-1**

## STEPS IN BUILDING SECTION PRODUCTION

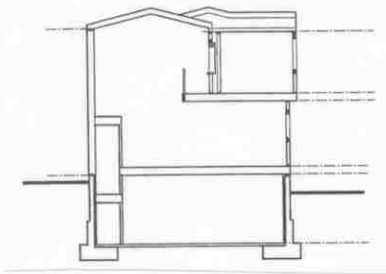
1. ESTABLISH DATUM  
(FOUNDATIONS, FLOORS, CEILINGS, ETC.)



2. ALIGN DATUM WITH FLOOR PLAN FOR WALLS

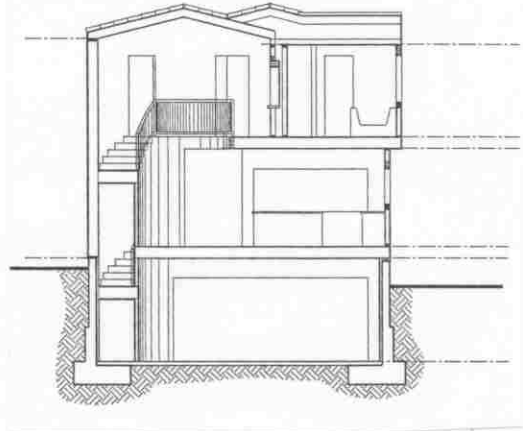
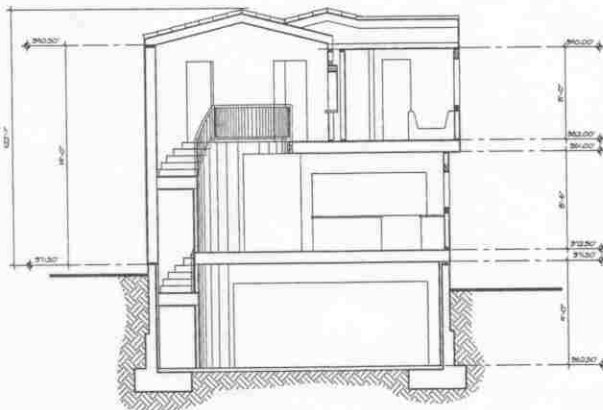


3. PROFILE THE SECTION CUT



4. ADD LARGE DETAILS (STAIRS, DOORS, ETC.)
5. ADD MATERIAL HATCHING

6. ADD NOTES AND DIMENSIONS



UNIVERSITY OF TOLEDO  
ENGINEERING TECHNOLOGY DEPT.  
ARCT-1100 ARCHITECT. GRAPHICS

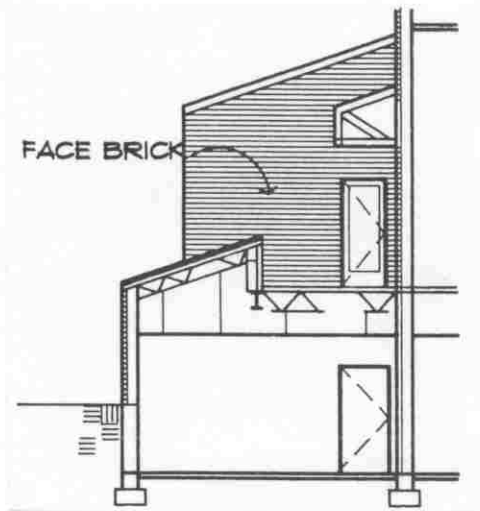
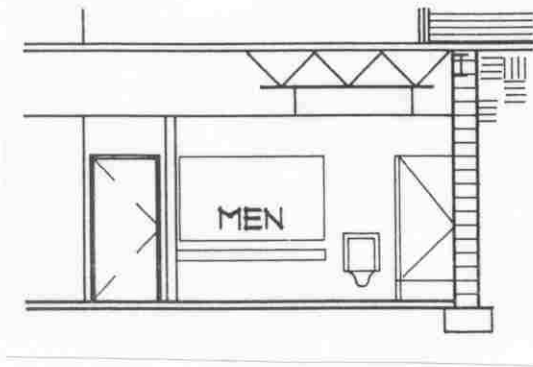
## *BUILDING SECTIONS*

SEMESTER: \_\_\_\_\_

CLASS HANDOUT: \_\_\_\_\_

*BS-2*

ITEMS BEHIND THE SECTION CUT SHOULD BE SHOWN AS AN ELEVATION VIEW (INTERIOR OR EXTERIOR).



LABEL MATERIALS & SECTION ASSEMBLIES EITHER INDIVIDUALLY OR IN GROUP WITH A LEADER.

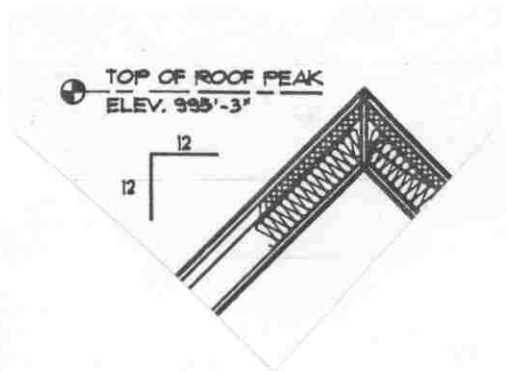
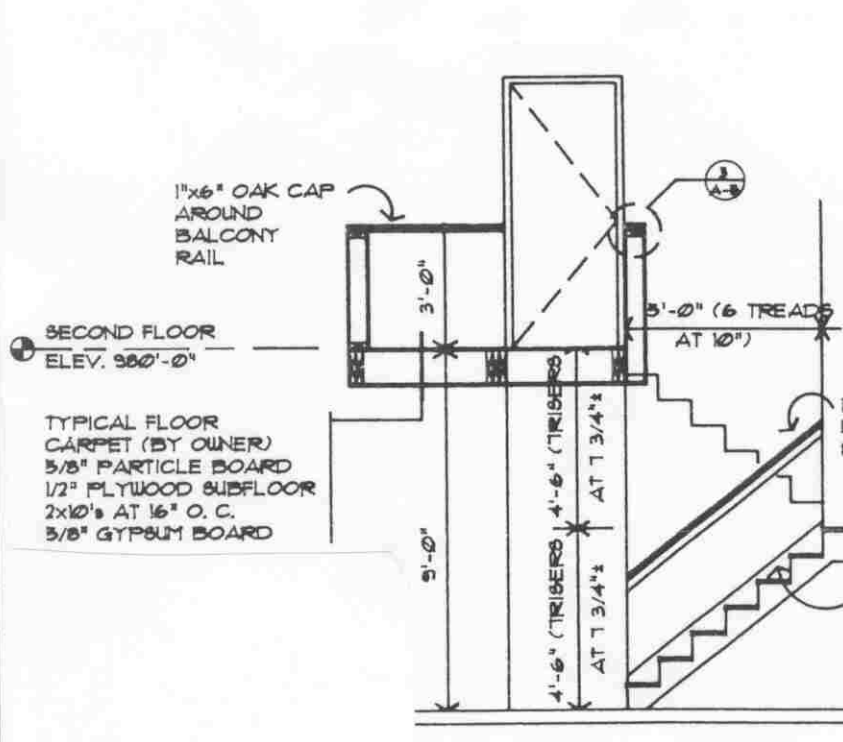
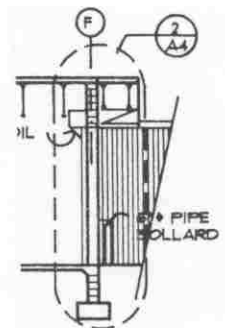
DIMENSIONS USUALLY ARE SPARSE.

- USE TARGET BUBBLES FOR ELEVATION CALLOUTS.
- ROOF SLOPE CALLOUTS.
- DIMENSIONS TO KEY ITEMS.

PATTERN CUT MATERIALS AND MATERIALS IN ELEVATION.

USE DETAIL BUBBLE REFERENCES TO LARGER MORE DETAILED SECTIONS.

ADD ROOM SPACE LABELS FOR CLARITY AND ORIENTATION.



UNIVERSITY OF TOLEDO  
ENGINEERING TECHNOLOGY DEPT.  
ARCT-1100 ARCHITECT. GRAPHICS

# BUILDING SECTIONS

SEMESTER: \_\_\_\_\_

CLASS HANDOUT: \_\_\_\_\_

**BS-3**