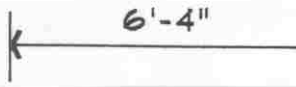


# DIMENSIONS

EXTENSION  
LINE



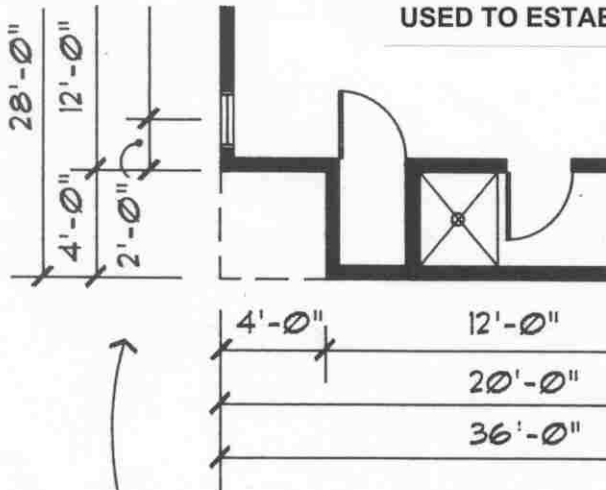
DIMENSION

TERMINATOR

DIMENSION  
LINE

- USE A GAP BETWEEN THE OBJECT LINE AND THE EXTENSION LINE.
- DRAW THE EXTENSION LINE AS A CENTERLINE IF THE EXTENSION IS TO THE CENTER OF AN OBJECT.
- DIMENSION IS PLACED ON TOP OF LINE, NOT IN IT.
- USE FEET & INCHES OVER 1 FOOT  
USE ONLY INCHES FOR LESS THAN 1 FOOT.

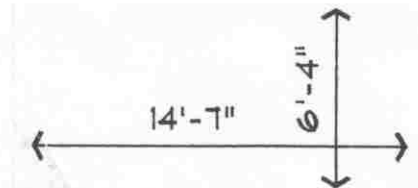
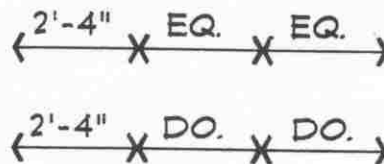
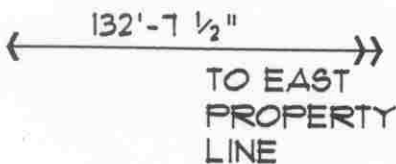
VERTICAL DIMENSIONS SHOULD ALWAYS READ FROM THE RIGHT SIDE OF THE SHEET.



IT USUALLY REQUIRES THREE DIMENSION STRINGS TO LOCATE ALL ITEMS ON A FLOOR PLAN (AS EXPLAINED ON PAGE 6-4). PLACE THE FIRST STRING 1/2" AWAY FROM THE OUTER WALL AND SPACE THE NEXT TWO AT 3/8" (MEASURE THE SPACING TO MAKE SURE THEY ARE UNIFORM).

HORIZONTAL DIMENSIONS SHOULD ALWAYS READ FROM THE BOTTOM OF THE SHEET.

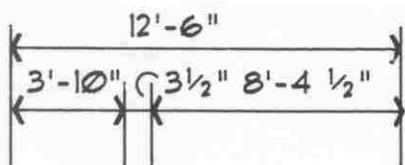
DIMENSIONS THAT WON'T FIT BETWEEN THE LEADER LINES SHOULD BE POSITIONED THIS WAY.



USE A DOUBLE ARROW FOR A DIMENSION THAT EXTENDS BEYOND THE DRAWING LIMITS.

DO. = DITTO  
EQ. = EQUAL

DO NOT CROSS DIMENSION LINES.



ALWAYS ENSURE THAT DIMENSION STRINGS ADD UP.

UNIVERSITY OF TOLEDO  
ENGINEERING TECHNOLOGY DEPT.  
ARCT-1100 ARCHITECT. GRAPHICS

## DIMENSIONS

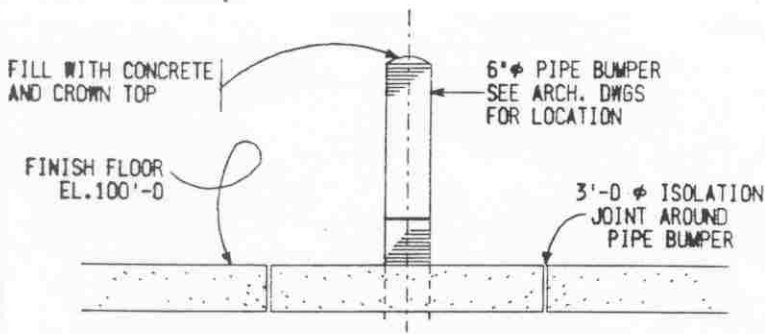
SEMESTER: \_\_\_\_\_

CLASS HANDOUT: \_\_\_\_\_

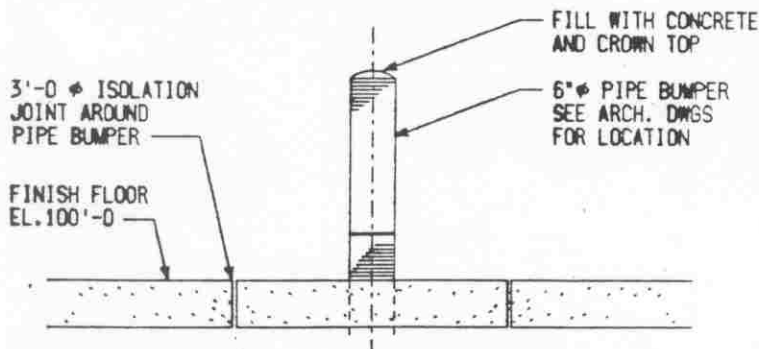
DM-1

# LEADERS

USED TO PLACE NOTES AND RELATE THEM TO PROPER ITEMS ON THE DRAWING.



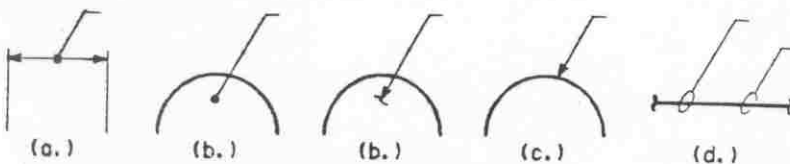
LEADERS (WRONG WAY)



LEADERS (RIGHT WAY)

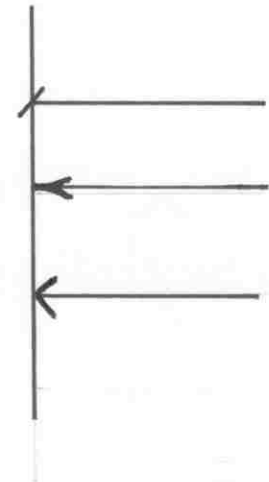
- LEADER HEADING TO THE LEFT STARTS AT THE BEGINNING OF NOTE.
- LEADER HEADING TO THE RIGHT STARTS AT THE END OF NOTE.
- LEADER CONNECTION TO NOTE IS ALWAYS HORIZONTAL.
- POINTER PORTION OF LEADER SHOULD BE ANGLED AT LEAST 30°
- DRAW ADJACENT LEADERS PARALLEL.

# TERMINATORS



TERMINATION OF LEADERS

- DOT ON LEADER TO DIMENSION LINE IN TIGHT SPACE
- DOT OR ARROW WITH BREAK WITHIN OUTLINE OF OBJECT
- ARROW TO OUTLINE OF OBJECT
- OVAL TO PIPE OR REBAR DRAWN AS SINGLE LINE



UNIVERSITY OF TOLEDO  
ENGINEERING TECHNOLOGY DEPT.  
ARCT-1100 ARCHITECT. GRAPHICS

*LEADERS &  
TERMINATORS*

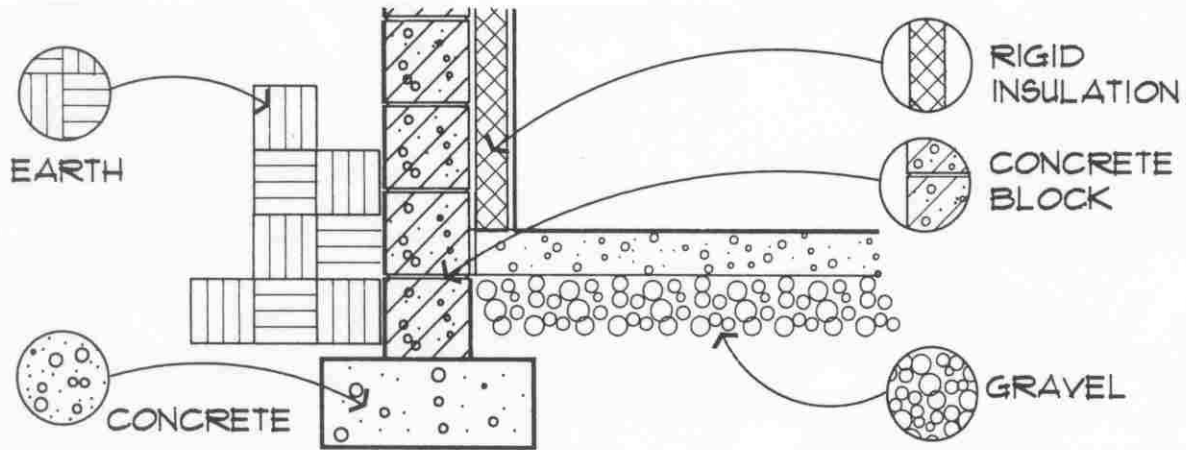
SEMESTER: \_\_\_\_\_

CLASS HANDOUT: \_\_\_\_\_

*DM-2*

# ARCHITECTURAL HATCHING

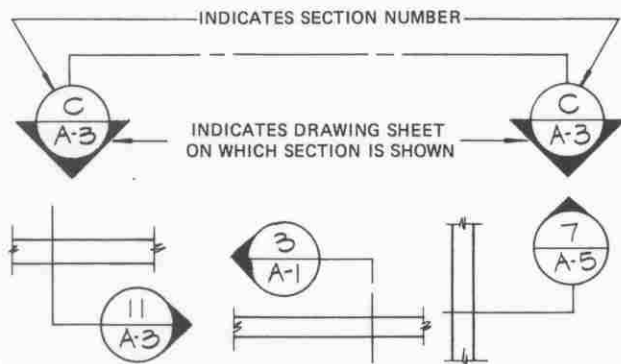
STANDARD PATTERNS USED TO DENOTE THE TYPE OF MATERIAL FACES THAT ARE VISIBLE DUE TO A SECTION CUT.



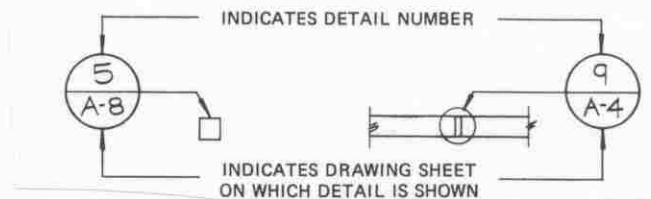
# ARCHITECTURAL SYMBOLS

USED TO DENOTE LOCATIONS OF SECTIONS, DETAILS, VIEWS, ELEVATIONS AND STANDARD LABELS

## SECTION LINES AND SECTION REFERENCES

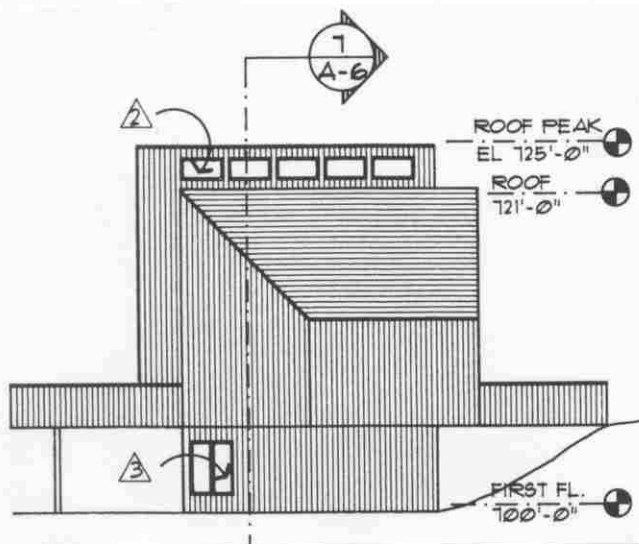


## DETAIL REFERENCES



DETAIL AND SECTION BUBBLES USE 1/2" DIAMETER CIRCLE

LEVEL LINE TARGET BUBBLE USE 1/4" DIAMETER CIRCLE AND HORIZONTAL CENTERLINE



UNIVERSITY OF TOLEDO  
ENGINEERING TECHNOLOGY DEPT.  
ARCT-1100 ARCHITECT. GRAPHICS

HATCHING &  
SYMBOLS

SEMESTER: \_\_\_\_\_

CLASS HANDOUT: \_\_\_\_\_

DM-3