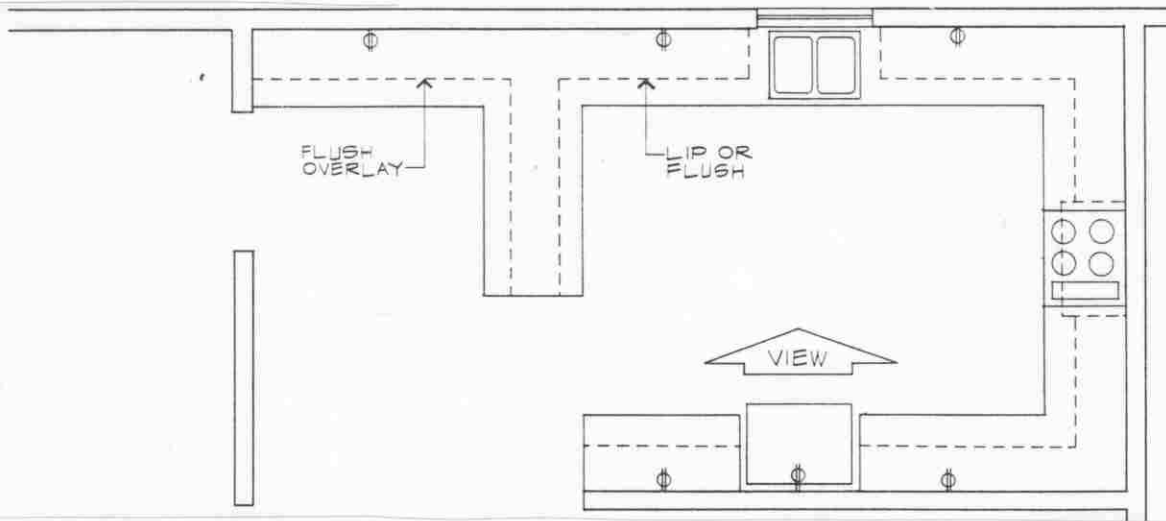


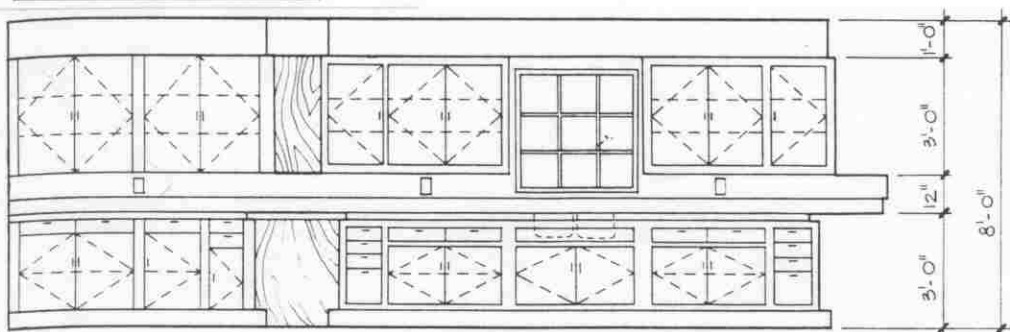


PERSPECTIVE OF KITCHEN

KITCHEN FLOOR PLAN



KITCHEN ELEVATION



INTERIOR ELEVATIONS

MEANS OF CONTROLLING THE CONSTRUCTION OF INTERIOR WALLS.

LOCATION OF CABINETS & FINISHES.

TYPES OF CABINETS, PARTITIONS & SPECIAL FEATURES.

SCALE USUALLY 1/2"=1'.

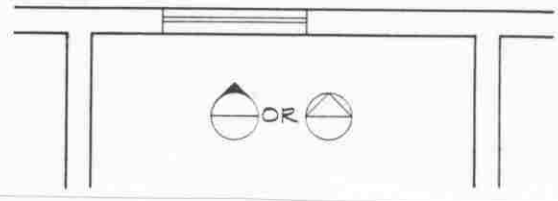
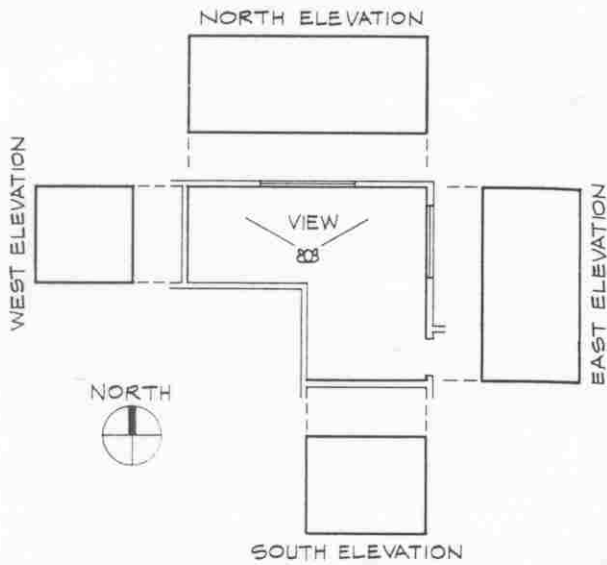
UNIVERSITY OF TOLEDO
ENGINEERING TECHNOLOGY DEPT.
ARCT-1100 ARCHITECT. GRAPHICS

INTERIOR
ELEVATIONS

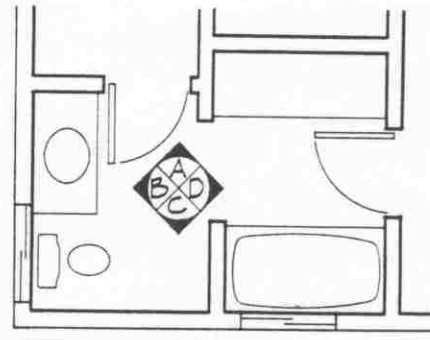
SEMESTER: _____

CLASS HANDOUT: _____

EL-5

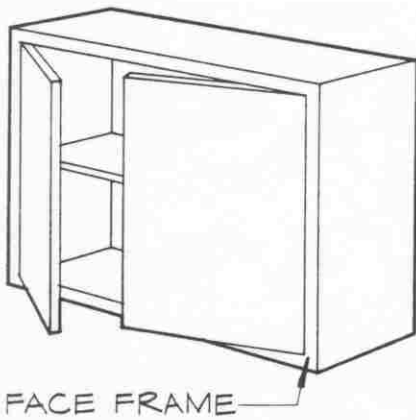


INTERIOR ELEVATION REFERENCE BUBBLES



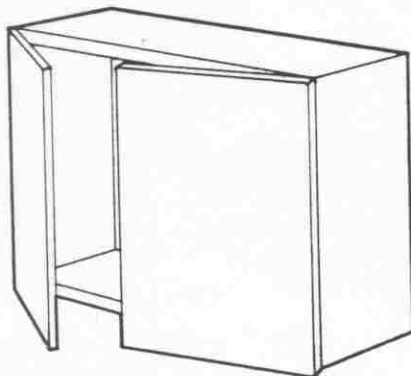
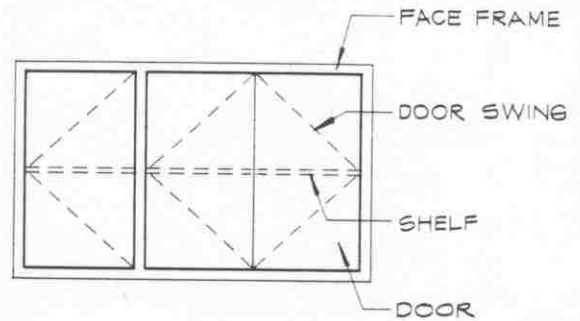
NAMING ELEVATION VIEWS

UNLIKE EXTERIOR ELEVATIONS, INTERIOR ELEVATIONS ARE NAMED IN RELATION TO THE DIRECTION THE IS TAKEN.



FLUSH DOOR

CABINETRY



FLUSH OVERLAY DOOR

UNIVERSITY OF TOLEDO
ENGINEERING TECHNOLOGY DEPT.
ARCT-1100 ARCHITECT. GRAPHICS

INTERIOR
ELEVATIONS

SEMESTER: _____

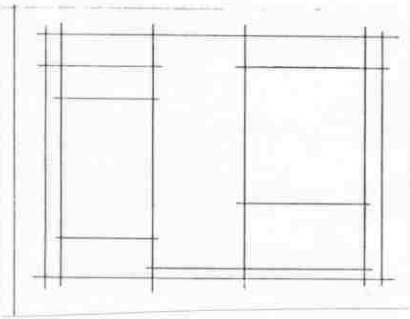
CLASS HANDOUT: _____

EL-6

STEPS IN INTERIOR ELEVATION PRODUCTION

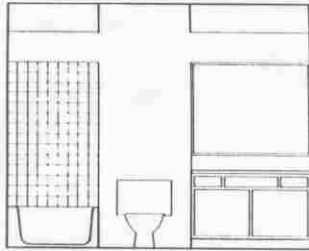
STEP 1 – BLOCK OUT

LAYOUT OUT THE FLOOR, CEILING AND WALL LINES. ADD SOFFITS, COUNTER TOPS AND THE BOTTOM OF UPPER CABINETS. USE LIGHT LINE WORK.



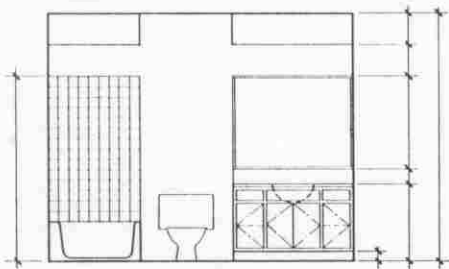
STEP 2- CABINETRY, FIXTURES & FINISHES

ADD THE CABINETRY AND FIXTURES UTILIZING CATALOGS FOR PRECONSTRUCTED UNITS. ADD HARD WALL COVERING LOCATIONS AND TYPES FOR HARD WALL SURFACES SUCH AS TILES. CHECK FOR CODE VIOLATIONS.



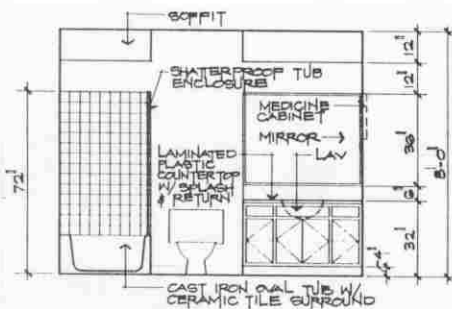
STEP 3 – DETAILS

ADD INFORMATION REGARDING DOOR SWINGS, SHELVES AND SINKS. ADD VERTICAL DIMENSIONS. HORIZONTAL DIMENSIONS ARE OBTAINED FROM FLOOR PLANS.



STEP 4 – NOTES

ADD DESCRIPTIONS FOR ALL APPLIANCES. ADD NOTES FOR FINISHES. DESCRIBE NON-STANDARD ITEMS. NOTE SPECIAL CLEARANCES.



BATH 2
SCALE: 1/2" = 1'-0"

UNIVERSITY OF TOLEDO
ENGINEERING TECHNOLOGY DEPT.
ARCT-1100 ARCHITECT. GRAPHICS

INTERIOR
ELEVATIONS

SEMESTER: _____

CLASS HANDOUT: _____

EL-7