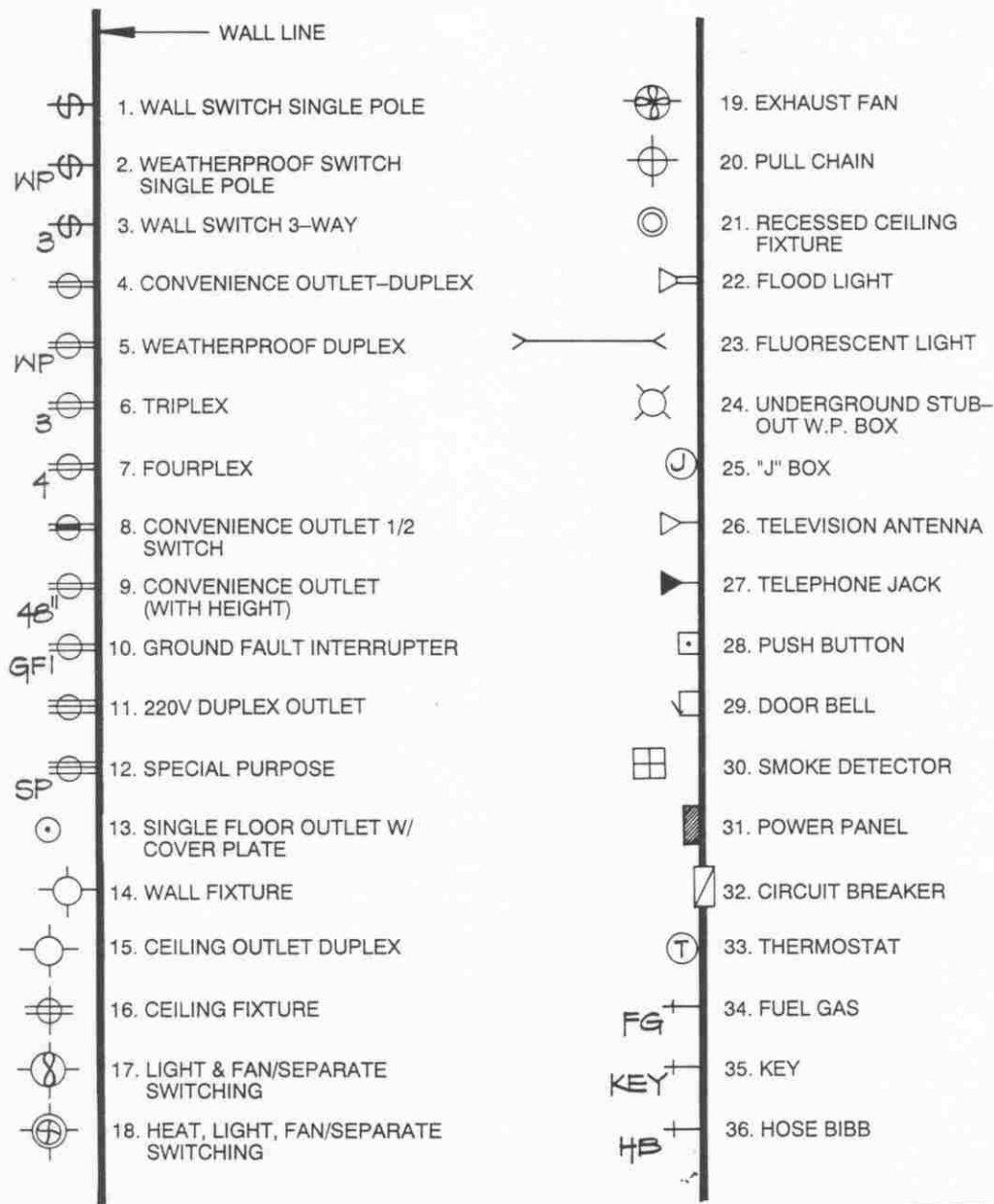


ELECTRICAL SYMBOLS



ELECTRICAL SYMBOLS ARE USED TO LOCATE SWITCHES, OUTLETS, LIGHTS AND OTHER ELECTRICALLY RELATED ITEMS.

THE PLANS WHICH USE THESE SYMBOLS ARE NOT WIRING OR CIRCUIT DIAGRAMS. THEY ARE "LOCATION PLANS" FOR THE ITEMS LAID OUT IN A METHOD THAT IS SENSIBLE TO THE DESIGNER OF THE FLOOR PLAN IN ORDER TO PROVIDE A PROPERLY CONTROLLED AND CONVENIENT ELECTRICAL SYSTEM.

PLANS ARE USED BY ELECTRICIANS WHO, WITH THE CODE CAN CREATE THE SYSTEM THAT IS INTENDED BY THE DESIGNER AND OWNER.

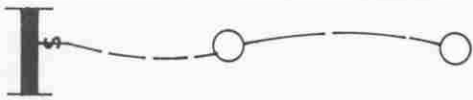
UNIVERSITY OF TOLEDO
ENGINEERING TECHNOLOGY DEPT.
ARCT-1100 ARCHITECT. GRAPHICS

*ELECTRICAL
PLANS*

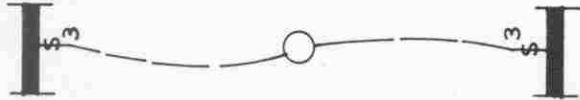
SEMESTER: _____

CLASS HANDOUT: _____

EP-1



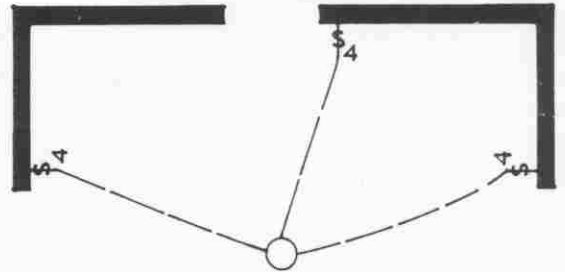
SINGLE-POLE SWITCH MAY BE CONNECTED TO ONE OR MORE LIGHTS.



THREE-WAY SWITCH; TWO SWITCHES CONTROL ONE OR MORE LIGHTS.



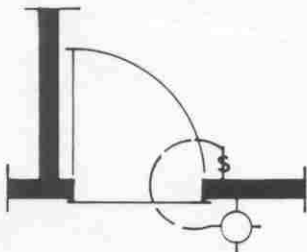
SINGLE-POLE SWITCH TO SINGLE CEILING LIGHT.



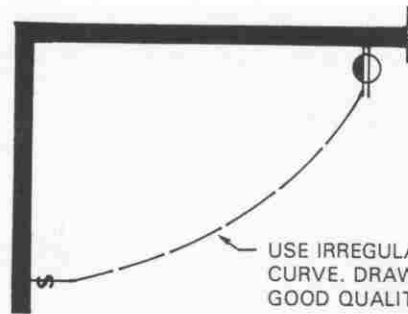
FOUR-WAY SWITCH; THREE SWITCHES CONTROL ONE OR MORE LIGHTS.

STANDARD DRAWING PRACTICE

THE CONNECTING LINE IS ONLY A REPRESENTATION OF A CONNECTION BETWEEN THE SWITCH AND THE FIXTURE SO THAT A RELATIONSHIP CAN BE ESTABLISHED BETWEEN THE TWO ITEMS.



SINGLE-POLE SWITCH TO WALL-MOUNTED LIGHT. TYPICAL INSTALLATION AT AN ENTRY OR PORCH.



USE IRREGULAR (FRENCH) CURVE. DRAW FREEHAND IF GOOD QUALITY.

SINGLE-POLE SWITCH TO SPLIT-WIRED OUTLET. COMMON APPLICATION IN A ROOM WITHOUT A CEILING LIGHT. ALLOWS SWITCHING A TABLE LAMP.

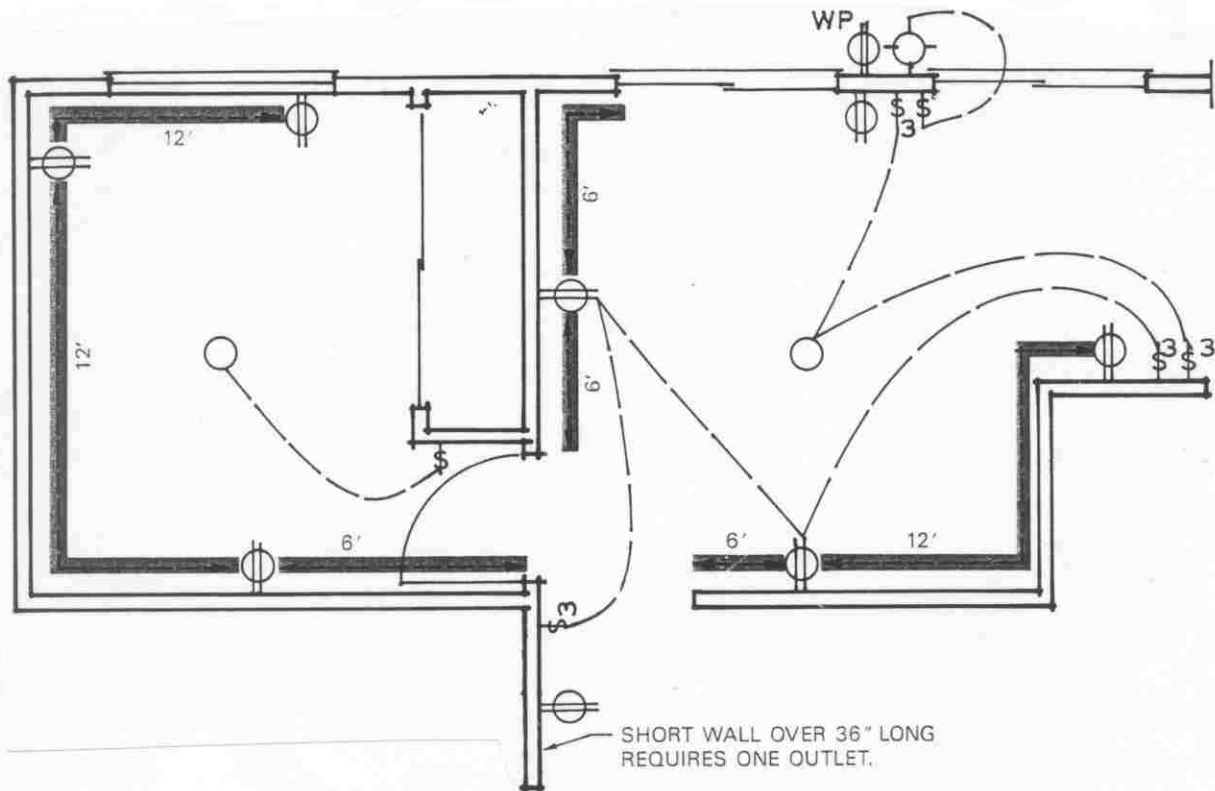
UNIVERSITY OF TOLEDO
ENGINEERING TECHNOLOGY DEPT.
ARCT-1100 ARCHITECT. GRAPHICS

ELECTRICAL
PLANS

SEMESTER: _____

CLASS HANDOUT: _____

EP-2



COMMON LAYOUT CONSIDERATIONS

(BASED ON CONVENIENCE & NATIONAL CODES)

PLACE DUPLEX OUTLETS AT A MAX. 12 FOOT DISTANCE ALONG WALLS.

DUPLEX OUTLETS SHOULD BE NO MORE THAN 6 FEET FROM A CORNER.

ALL ROOMS REQUIRE A SWITCHED DUPLEX OR CEILING LIGHT.

PLACE WATERPROOF DUPLEXES AT CONVENIENT OUTDOOR LOCATIONS.

CONSIDER FURNITURE LAYOUT FOR DUPLEXES.

PLACE DUPLEXES LIBERALLY IN KITCHENS.

PLACE DUPLEXES AT EACH BATHROOM SINK.

GFI's ARE REQUIRED WITHIN 5 FEET OF WATER.

LIGHTING REQUIRED AT EXTERIOR ENTRIES.

LIGHT STAIRWAYS WELL.

UNIVERSITY OF TOLEDO
 ENGINEERING TECHNOLOGY DEPT.
 ARCT-1100 ARCHITECT. GRAPHICS

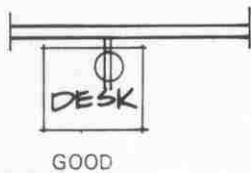
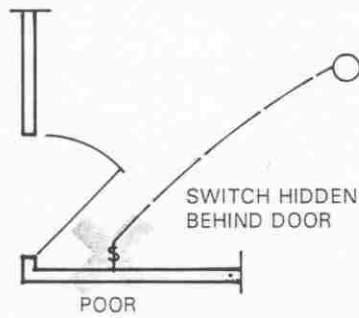
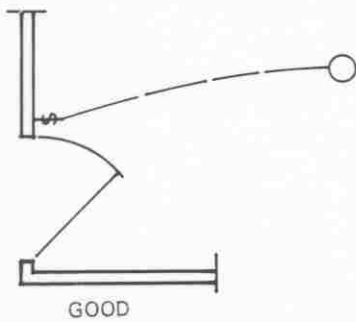
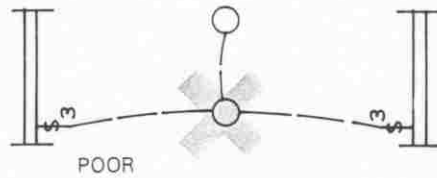
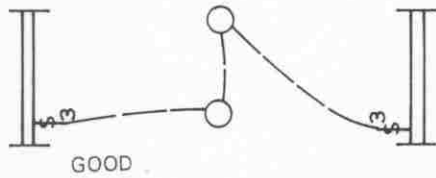
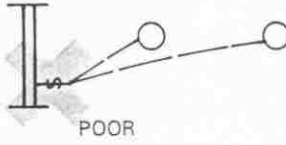
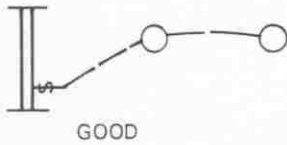
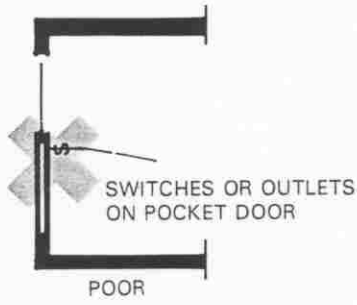
ELECTRICAL
PLANS

SEMESTER: _____

CLASS HANDOUT: _____

EP-3

GOOD LAYOUT PRACTICES



UNIVERSITY OF TOLEDO
ENGINEERING TECHNOLOGY DEPT.
ARCT-1100 ARCHITECT. GRAPHICS

ELECTRICAL
PLANS

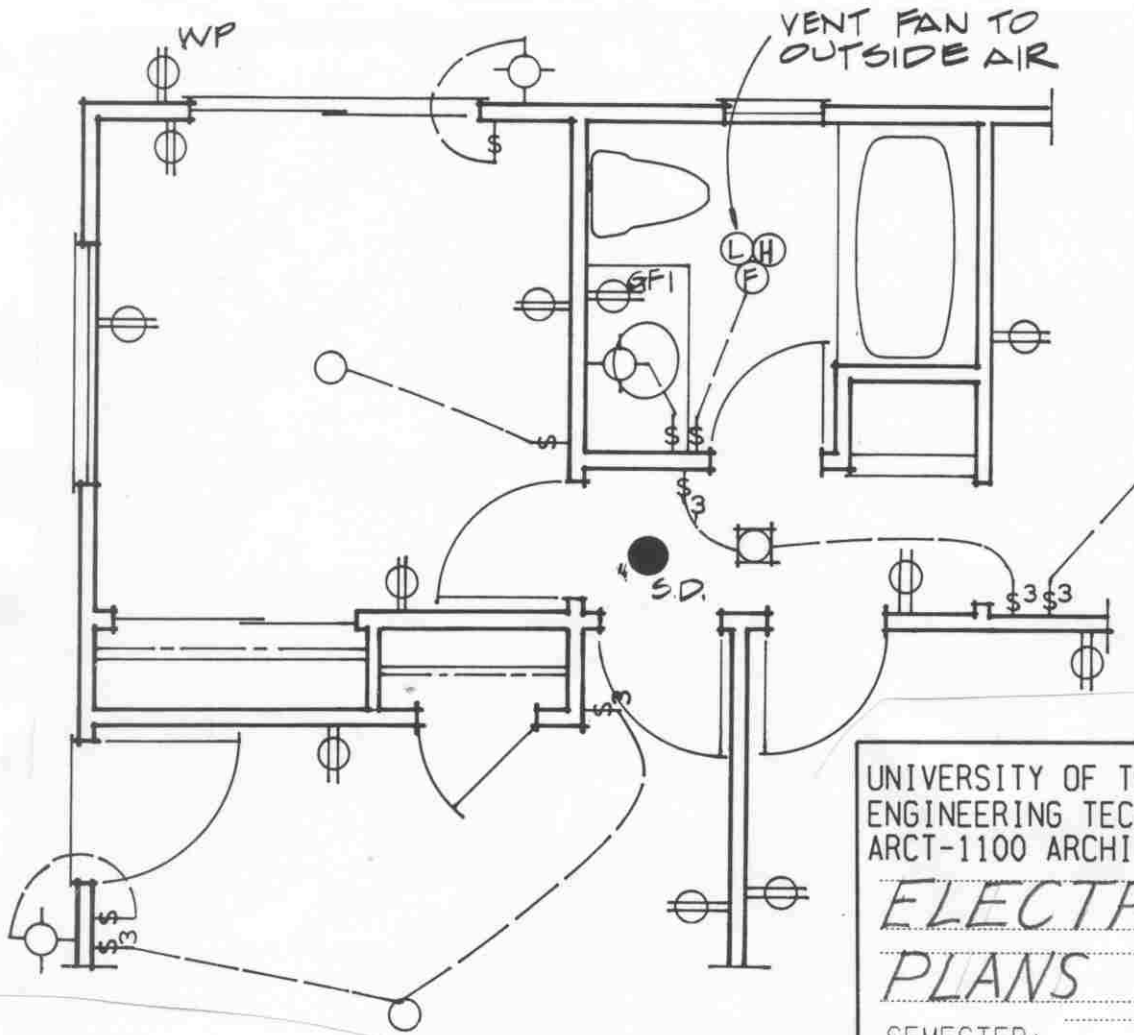
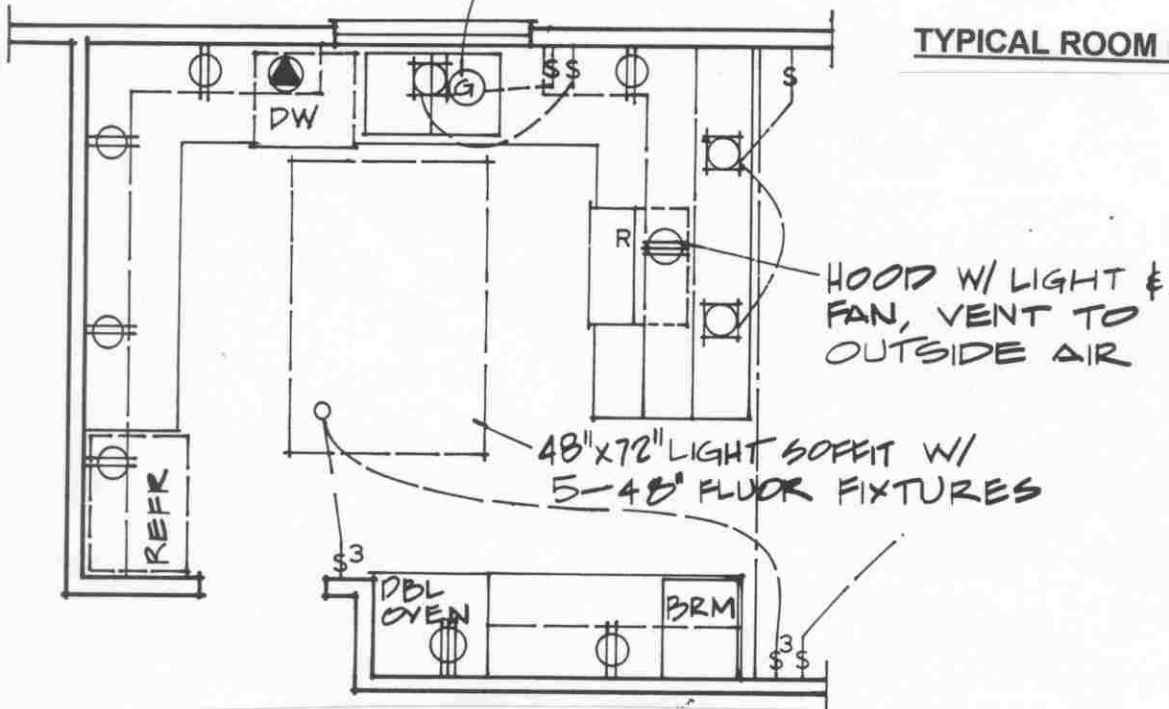
SEMESTER: _____

CLASS HANDOUT: _____

EP-4

GARB. DISP.

TYPICAL ROOM LAYOUTS



UNIVERSITY OF TOLEDO
 ENGINEERING TECHNOLOGY DEPT.
 ARCT-1100 ARCHITECT. GRAPHICS

*ELECTRICAL
 PLANS*

SEMESTER: _____

CLASS HANDOUT: _____

EP-5