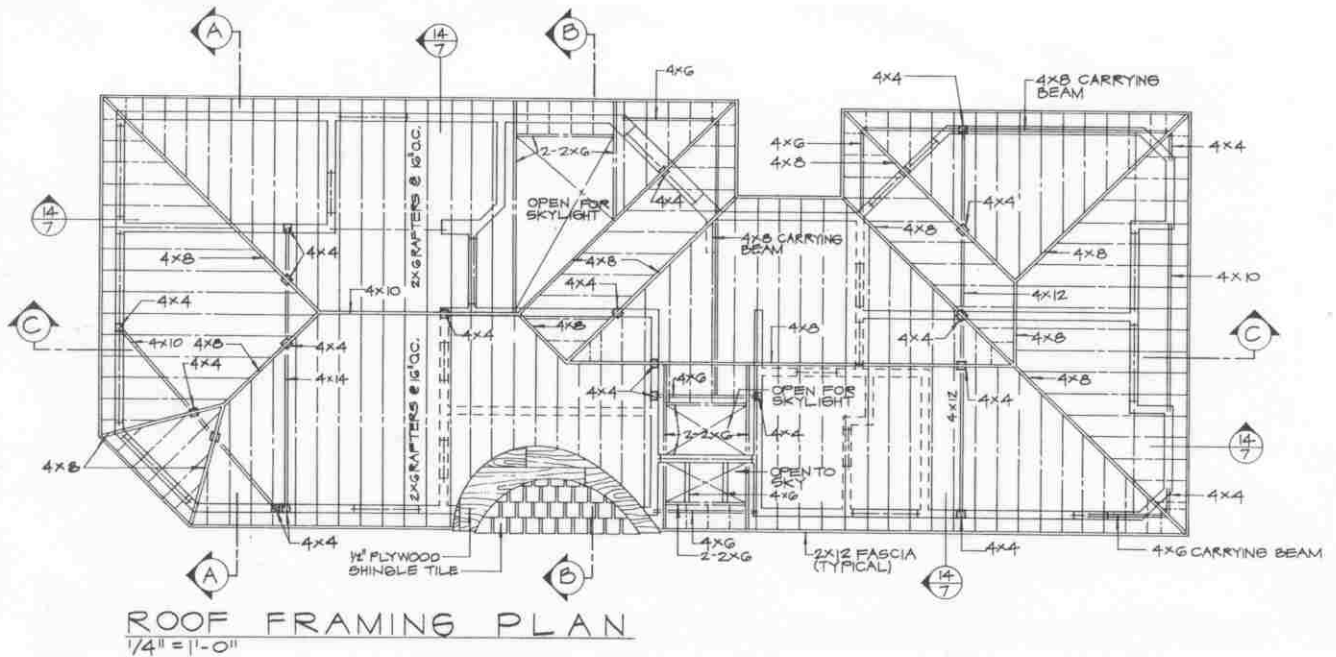


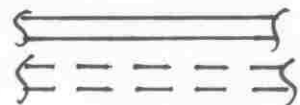
FRAMING PLANS

- USED TO DENOTE AND LOCATE STRUCTURAL MEMBERS IN ROOFS AND FLOORS
 - WOOD
 - STEEL (BEAMS, COLUMNS BAR JOISTS)
- FRAMING CAN BE SHOWN
 - ON FLOOR PLAN (IF SIMPLE)
 - ON SEPARATE FRAMING PLAN WHEN COMPLEX



USE THE FLOOR PLAN AS A BASE

- SOLID LINES = BEARING WALLS
- DASHED LINES = NON-BEARING WALLS



UNIVERSITY OF TOLEDO
ENGINEERING TECHNOLOGY DEPT.
ARCT-1100 ARCHITECT. GRAPHICS

FRAMING PLANS

SEMESTER: _____

CLASS HANDOUT: _____

FP-16

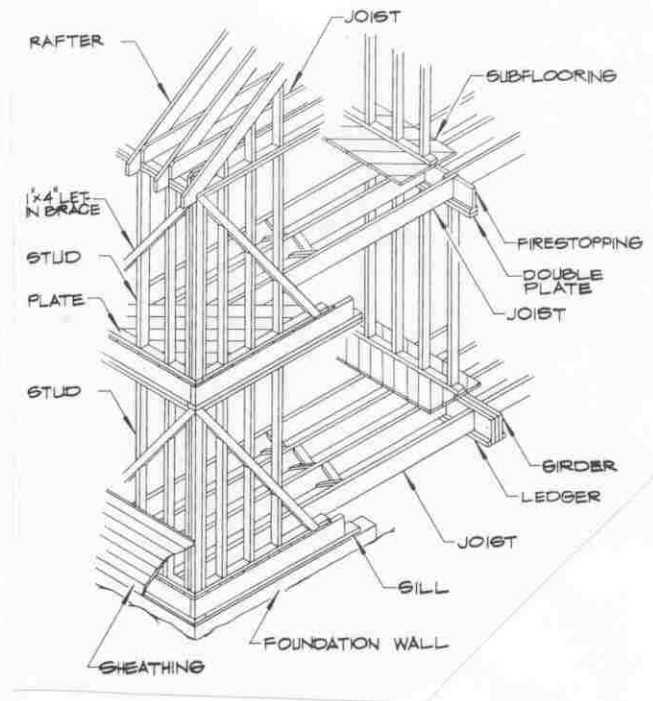
WOOD FRAMING

CALL OUT ALL NON-VERTICAL MEMBERS (JOISTS, RAFTERS, HEADERS) AS WELL AS MAJOR POSTS.

CALL OUT SIZE & SPACING OF WOOD MEMBERS

- NOMINAL SIZE LUMBER
- SPACING 16" to 48" @ EVEN 4"
- REPEATED JOISTS ARE SHOWN WITH HALF ARROW AND LABEL.

2x8 @ 16" O.C.



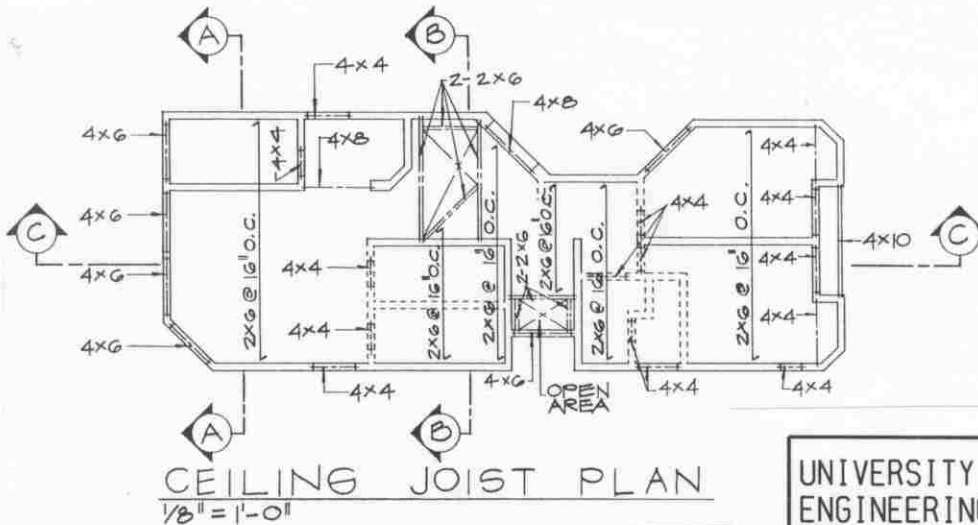
- SHOW ADDED CENTERLINE TO DENOTE LOCATION OF HEADERS AT OPENINGS



BEARING



NON-BEARING



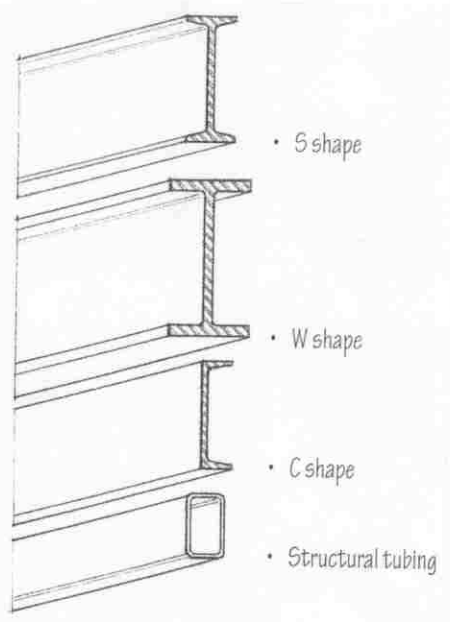
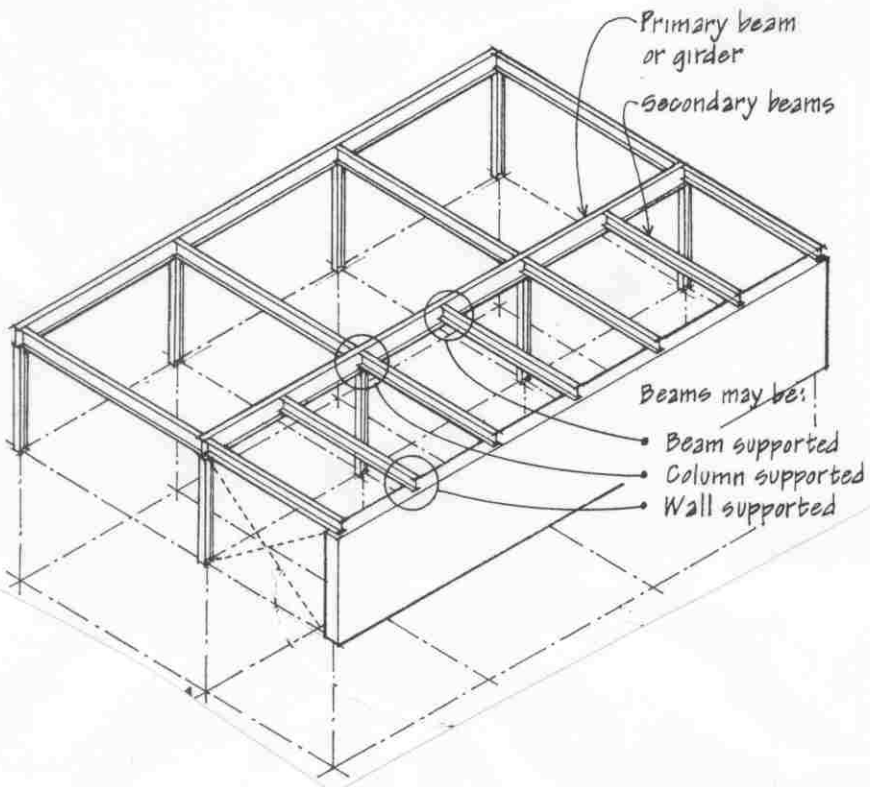
UNIVERSITY OF TOLEDO
ENGINEERING TECHNOLOGY DEPT.
ARCT-1100 ARCHITECT. GRAPHICS

FRAMING
PLANS

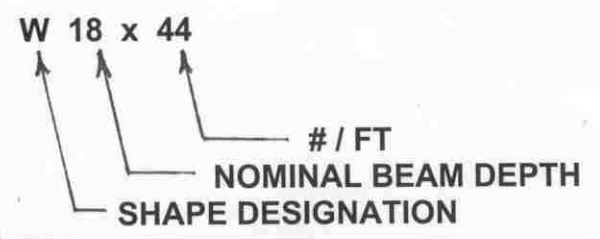
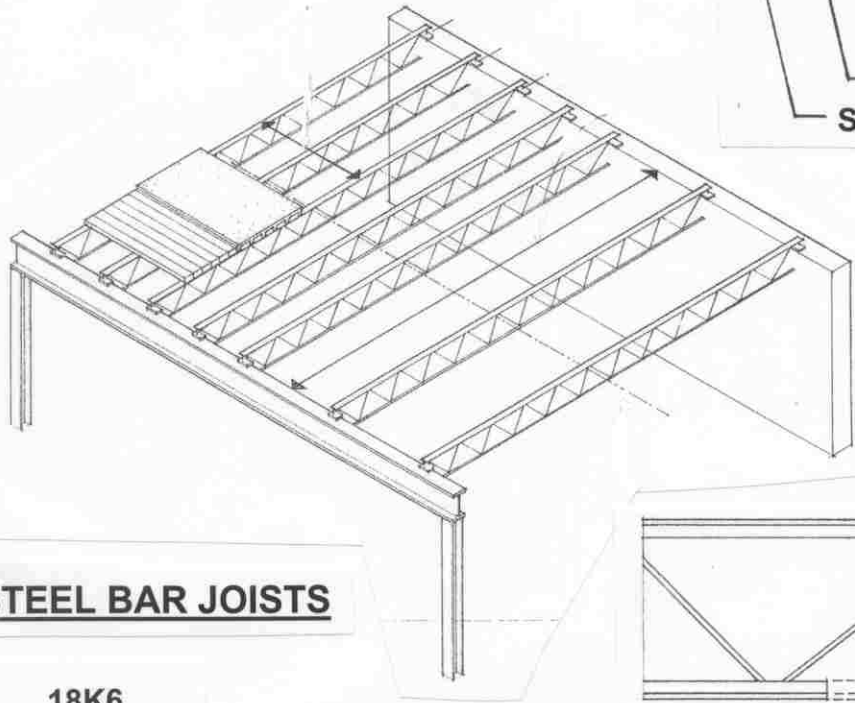
SEMESTER: _____

CLASS HANDOUT: _____

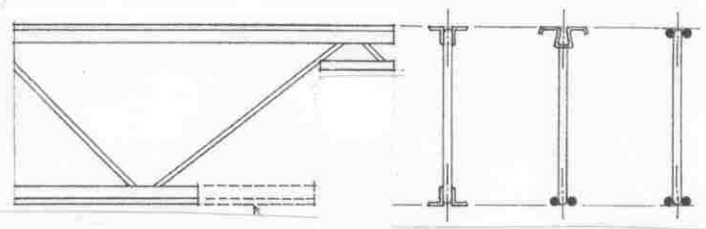
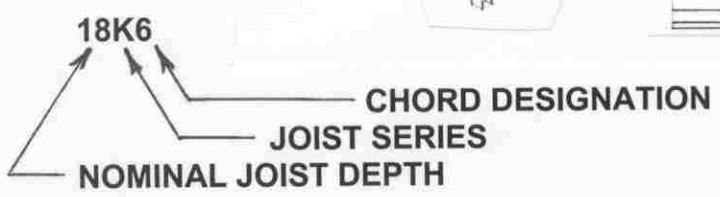
FP-17



STEEL FRAMING



STEEL BAR JOISTS



JOIST SERIES

- K - SERIES 12' to 60'
- LH - SERIES 28' to 60'
- DLH - SERIES UP TO 144'

- STANDARD
- LONG-SPAN
- DEEP LONG SPAN

UNIVERSITY OF TOLEDO
ENGINEERING TECHNOLOGY DEPT.
ARCT-1100 ARCHITECT. GRAPHICS

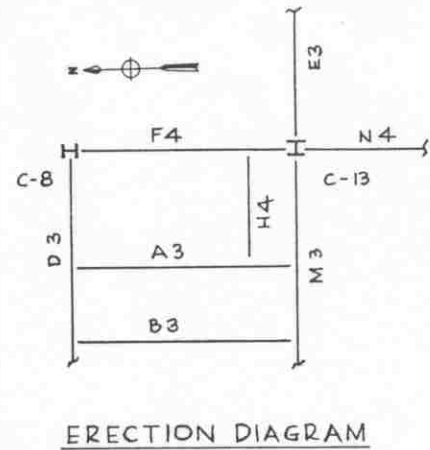
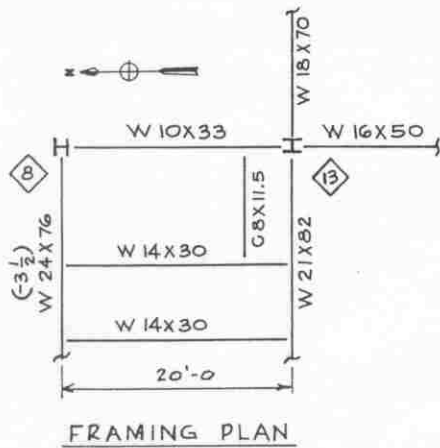
**FRAMING
PLANS**

SEMESTER: _____

CLASS HANDOUT: _____

FP-18

STRUCTURAL FRAMING, ERECTION & DETAILS



FRAMING PLAN

- PREPARED BY DESIGNER
- LAYS OUT ENTIRE FRAME NETWORK
- SPECIFIES STRUCTURAL MEMBERS

ERECTION DIAGRAM

- PREPARED BY STEEL SUPPLIER
- USED AS KEY FOR MEMBER DETAILS

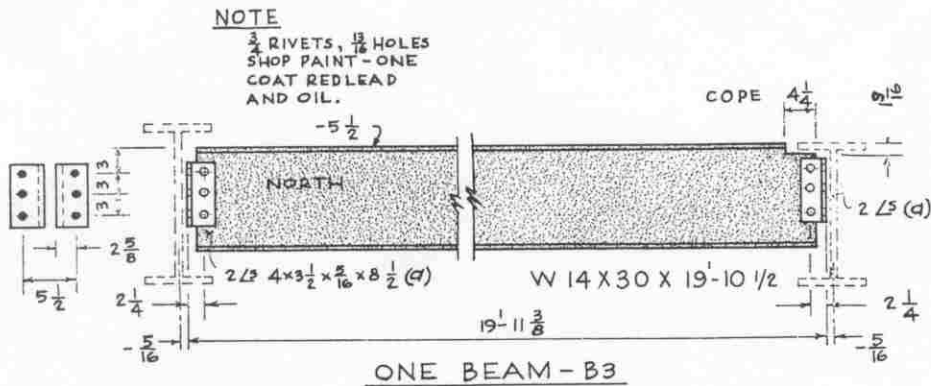
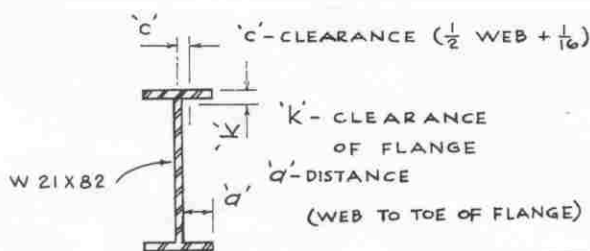


Fig. 8 Framing and erection plans of B3.

STRUCTURAL DETAILS

- PREPARED BY STEEL SUPPLIER
- DETAILS INDIVIDUAL MEMBERS INCLUDING CONNECTIONS
- USES STANDARD SHAPE CHARTS FOR DIMENSIONING & DETAILING



UNIVERSITY OF TOLEDO
 ENGINEERING TECHNOLOGY DEPT.
 CET-1100 ARCHITECT. GRAPHICS

FRAMING
 PLANS

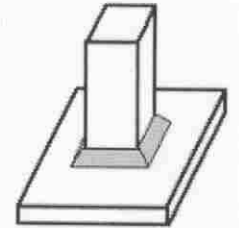
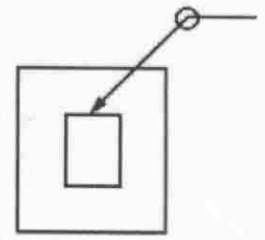
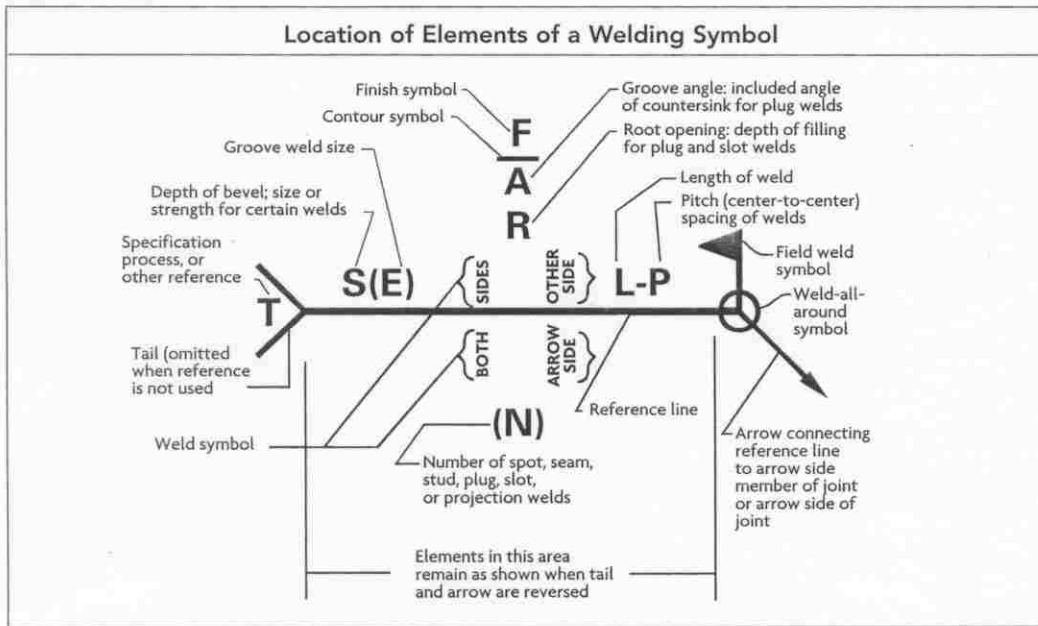
SEMESTER: _____

CLASS HANDOUT: _____

FP-20

WELDING SYMBOLOGY

WELD ALL AROUND JOINT



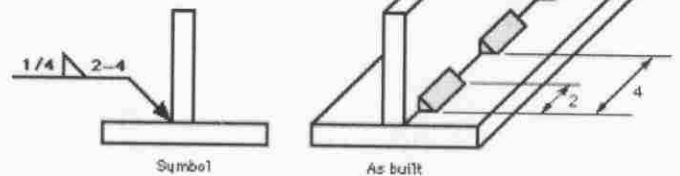
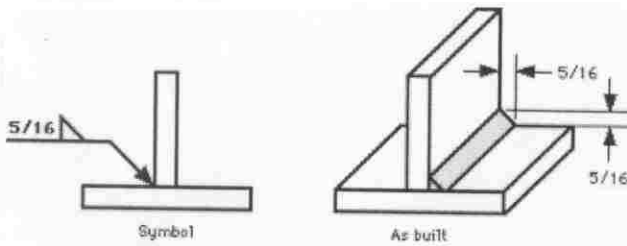
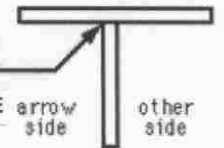
FILLET WELDS



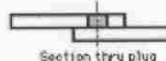
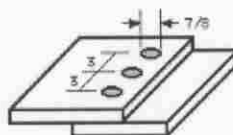
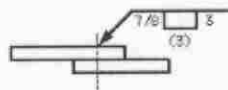
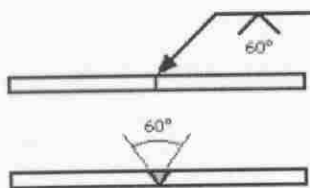
SIDE TO WHICH SYMBOL APPLIES

OTHER SIDE

ARROW SIDE



GROOVE, SLOT & PLUG WELDS



UNIVERSITY OF TOLEDO
ENGINEERING TECHNOLOGY DEPT.
CET-1100 ARCHITECT. GRAPHICS

*FRAMING
PLANS*

SEMESTER:

CLASS HANDOUT:

FP-21