

REFLECTED CEILING PLAN

SCALE: 1/8"=1'-0"



## REFLECTED CEILING PLAN

SHOWS THE LAYOUT OF ITEMS ON CEILING.

DRAWN AS IF YOU ARE FLOATING FACE DOWN JUST BELOW THE CEILING LOOKING AT A MIRROR ON THE FLOOR.

STEPS IN DESIGN:

1. USE FLOOR PLAN TO LOCATE WALLS (BOTH PENETRATING AND NON-PENETRATING WALLS).
2. LOCATE DOORS AND SWINGS LIGHTLY.
3. WORK IN CEILING GRID. IDENTIFY GYP. BOARD CEILINGS.
4. LOCATE LIGHTING (CENTERED OVER WORK AREAS)
5. LOCATE AIR SUPPLIES AND RETURNS
6. LOCATE ADDITIONAL ITEMS (EXIT SIGNS, SPRINKLER HEADS, SPEAKERS, CONTROL JOINTS).

SYMBOL	DESCRIPTION
	1'-0x4'-0 LIGHT FIXTURE
	2'-0x4'-0 LIGHT FIXTURE
	RECESSED DOWNLIGHT
	WALL WASHER DOWN LIGHT
	SURFACE MOUNTED DESIGNER FIXTURE
	SURFACE MOUNTED CAN FIXTURE
	PENDANT CAN FIXTURE
	TRACK MOUNTED PENDANT LIGHT FIXTURE
	UTILITY FLOURESCENT LIGHT FIXTURE
	SINGLE BULB STRIP FIXTURE
	SPEAKER
	AIR SUPPLY GRILLE
	AIR RETURN GRILLE
	EXIT SIGN (SEE ELECTRICAL)
	EMERGENCY LIGHT FIXTURE (SEE ELECTRICAL)
	GYPSUM BOARD CEILING
	2x2 ACCOUSTIC CEILING

UNIVERSITY OF TOLEDO  
ENGINEERING TECHNOLOGY DEPT.  
ARCT-1100 ARCHITECT. GRAPHICS

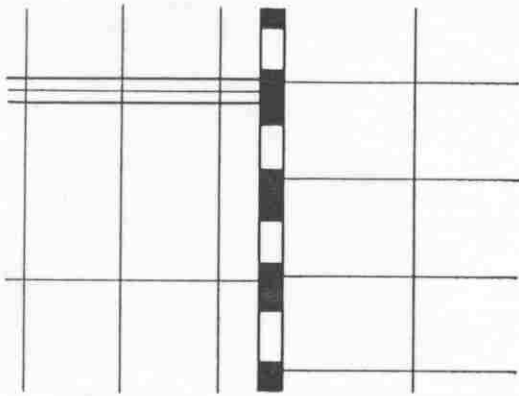
*REFLECTED  
CEILING PLANS*

SEMESTER: \_\_\_\_\_

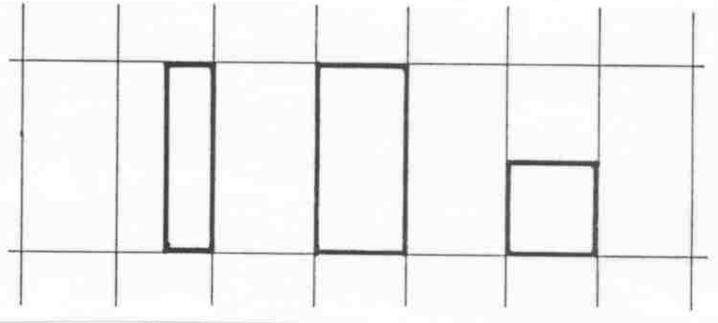
CLASS HANDOUT: \_\_\_\_\_

*RC-1*

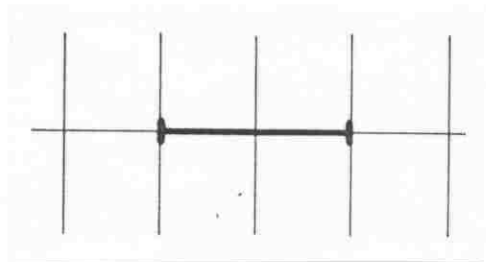
PENETRATING & NON-PENETRATING WALLS



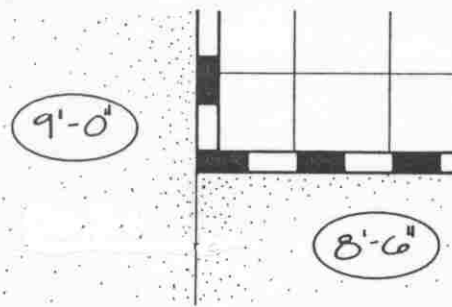
FLUORESCENT FIXTURES



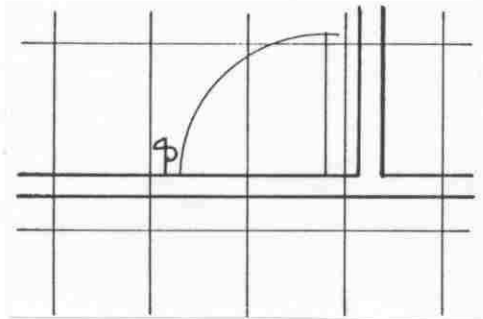
STRIP FLUORESCENT LIGHTING



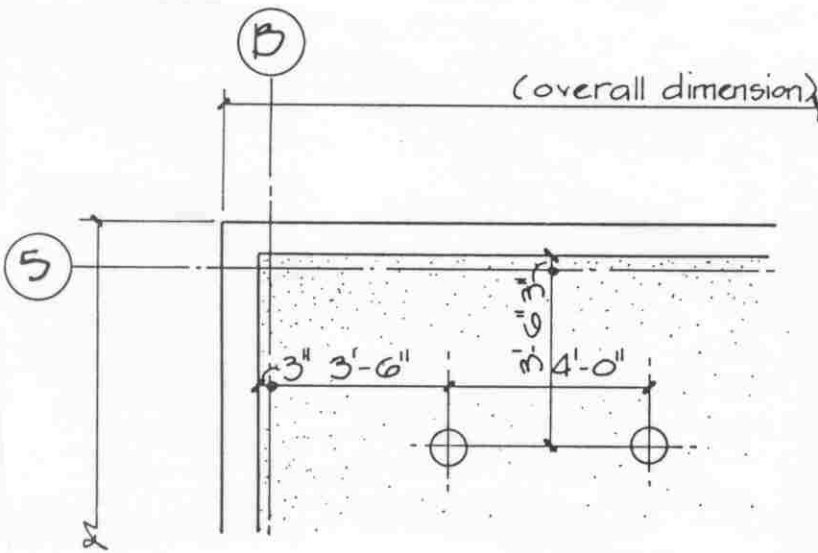
CEILING HEIGHT REFERENCE BUBBLES



DOOR & SWING LOCATIONS



LOCATION OF RECESSED LIGHTING



UNIVERSITY OF TOLEDO  
ENGINEERING TECHNOLOGY DEPT.  
ARCT-1100 ARCHITECT. GRAPHICS

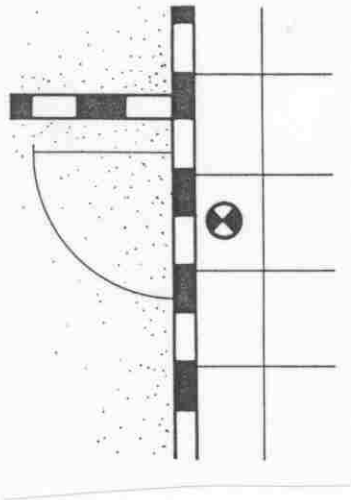
*REFLECTED  
CEILING PLANS*

SEMESTER: \_\_\_\_\_

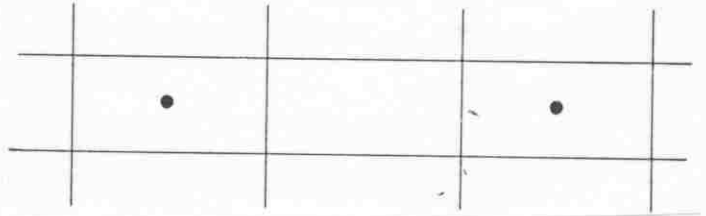
CLASS HANDOUT: \_\_\_\_\_

**RC-2**

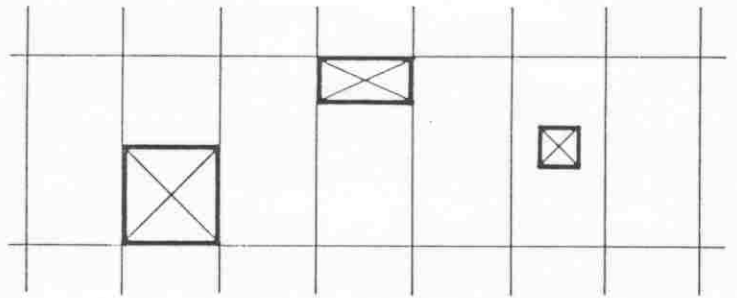
EXIT SIGNS



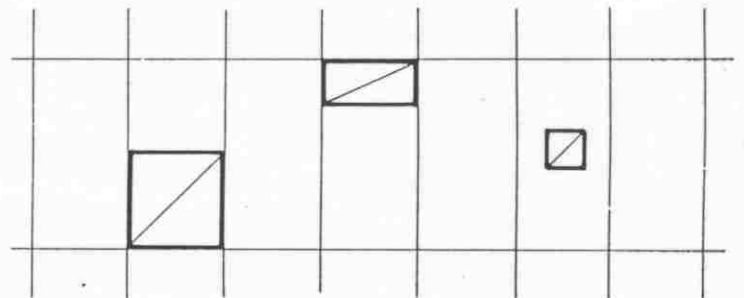
FIRE SPRINKLER HEADS



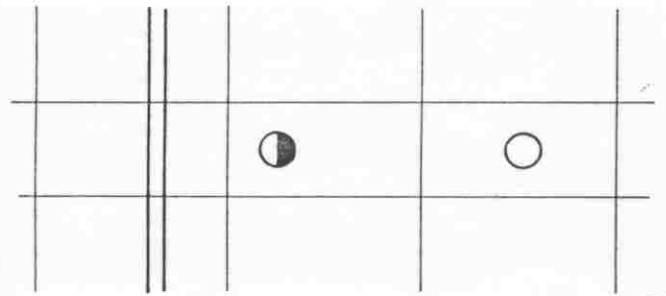
AIR SUPPLY GRILLS



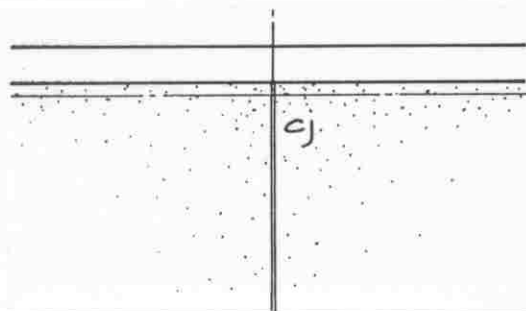
AIR RETURN GRILLS



RECESSED LIGHTING



CONTROL JOINTS IN GYP. BOARD CEILINGS



UNIVERSITY OF TOLEDO  
ENGINEERING TECHNOLOGY DEPT.  
ARCT-1100 ARCHITECT. GRAPHICS

*REFLECTED  
CEILING PLANS*

SEMESTER: \_\_\_\_\_

CLASS HANDOUT: \_\_\_\_\_

**RG-3**