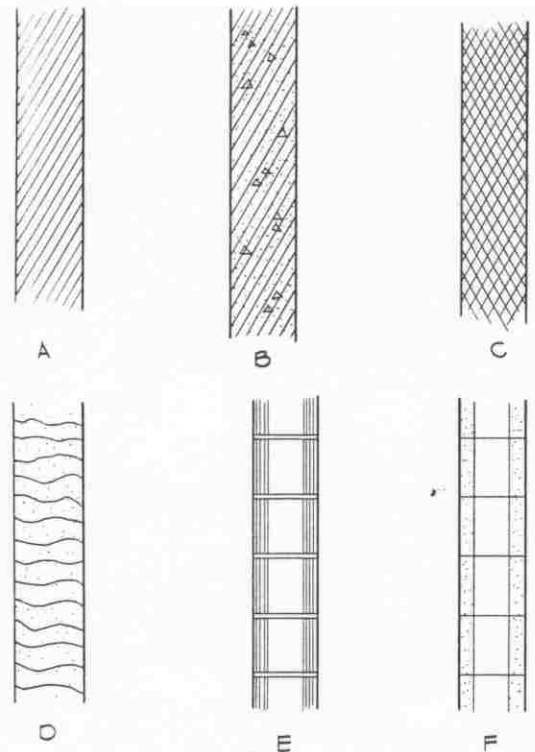
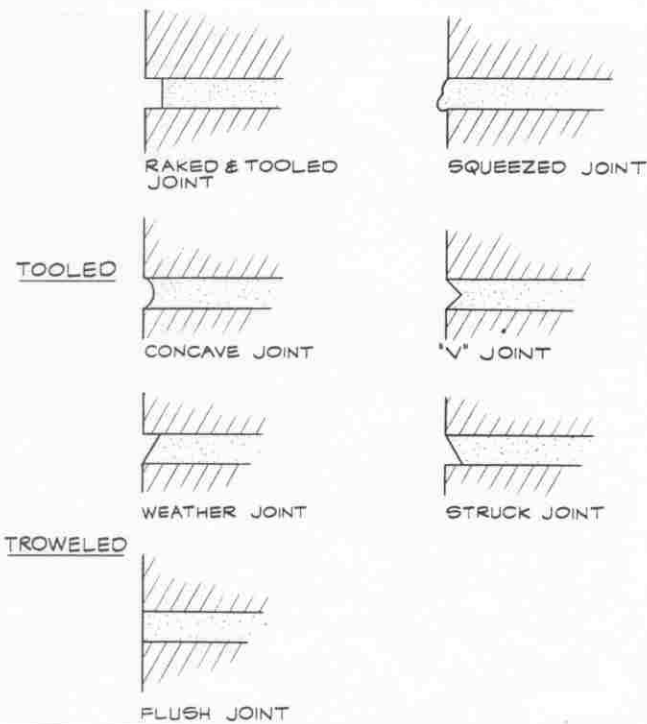


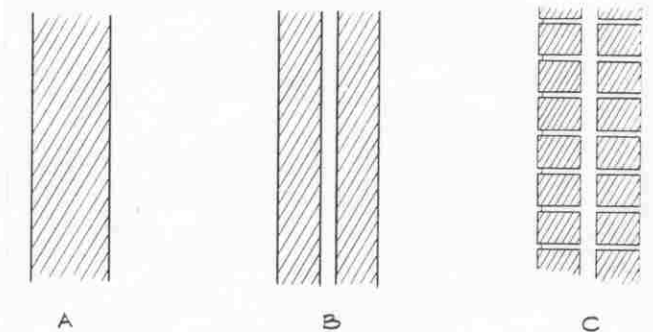
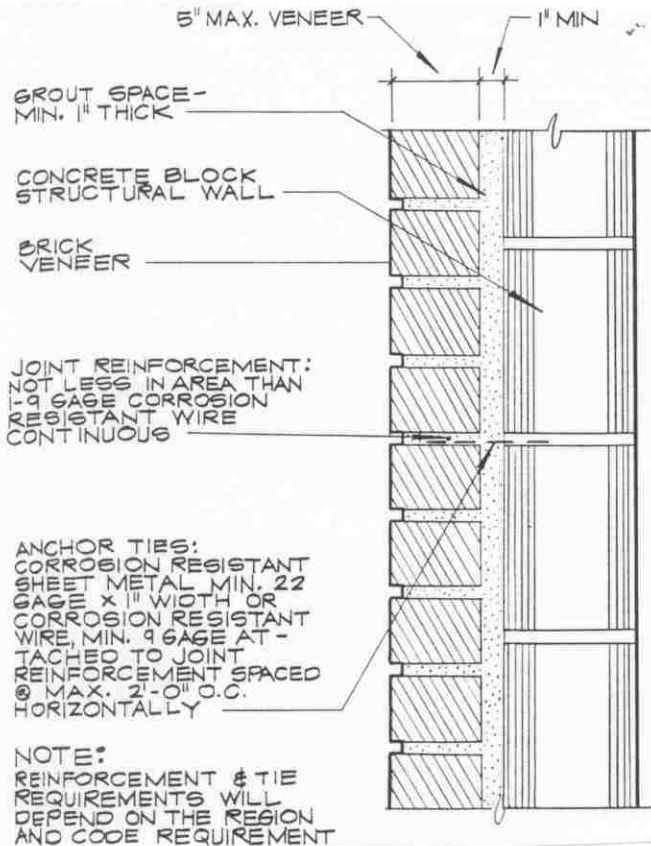
## MASONRY MORTAR JOINT TYPES

## CMU IN SECTION



## CMU WITH BRICK VENEER

## BRICK IN SECTION



UNIVERSITY OF TOLEDO  
ENGINEERING TECHNOLOGY DEPT.  
ARCT-1100 ARCHITECT. GRAPHICS

# MASONRY SECTIONS

SEMESTER: \_\_\_\_\_

CLASS HANDOUT: \_\_\_\_\_

WS-5

# MASONRY WALL SECTIONS

DIMENSION THE HEIGHT OF WALLS TO SATISFY MODULAR UNIT HEIGHTS.

SHOW REINFORCING WHEN REQUIRED.

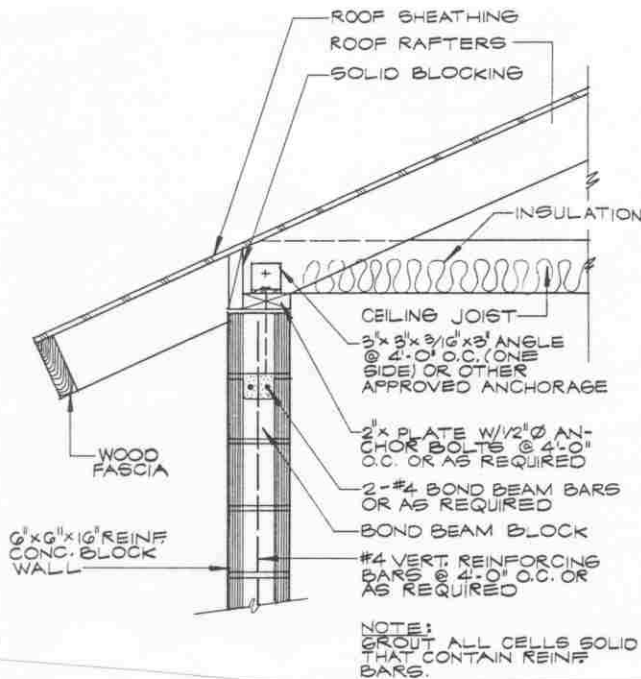
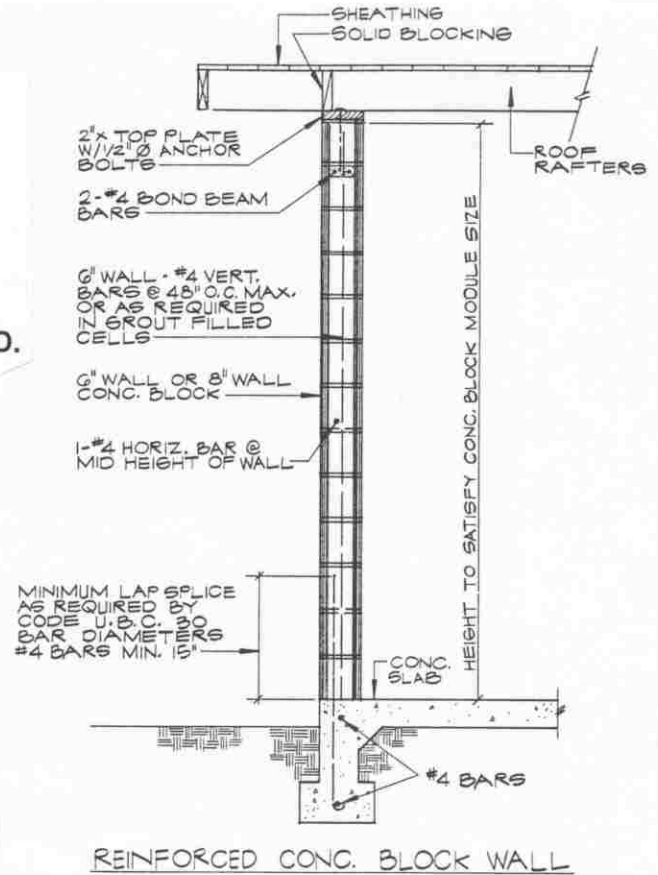
NOTE SPECIAL CELL FILLING WHEN REQUIRED.

CONNECTIONS TO WOOD WALLS, ROOFS AND FLOORS SHOULD BE SHOWN BOLTED.

BLOCKS AND BRICKS ARE DRAWN SPACED TO THEIR NOMINAL SIZE.

TIES TO MASONRY VENEER SHOULD BE SHOWN WHEN REQUIRED.

WEATHER-STRIPPING SHOULD ATTACH AT A MORTAR JOINT.



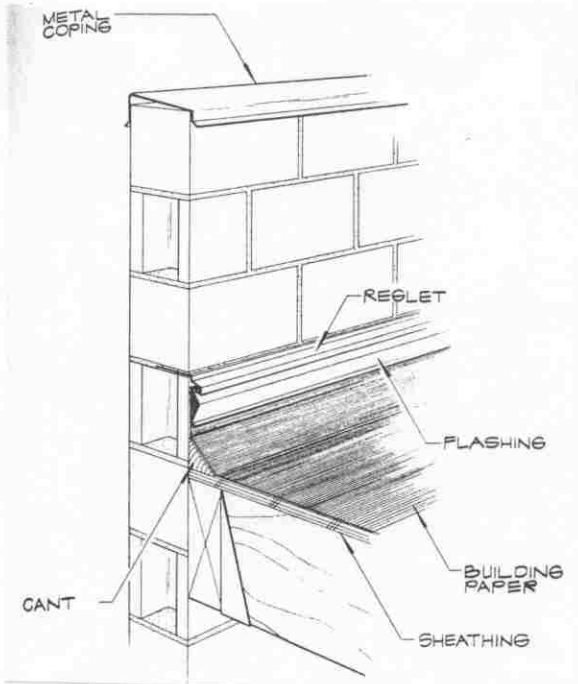
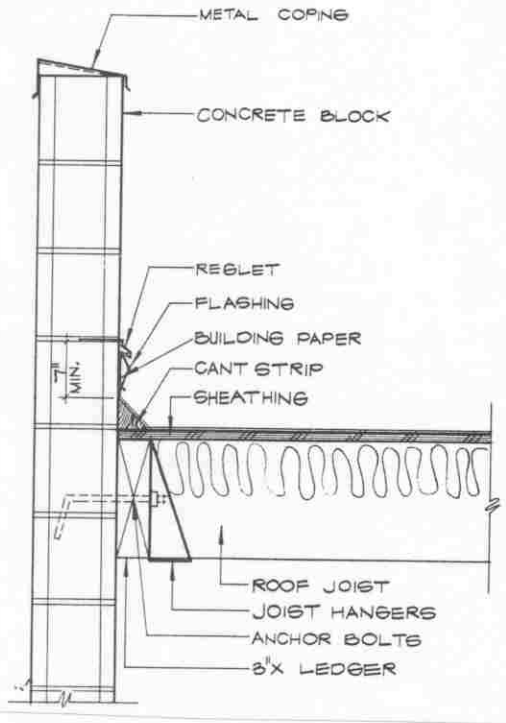
UNIVERSITY OF TOLEDO  
ENGINEERING TECHNOLOGY DEPT.  
ARCT-1100 ARCHITECT. GRAPHICS

## MASONRY WALL SECTIONS

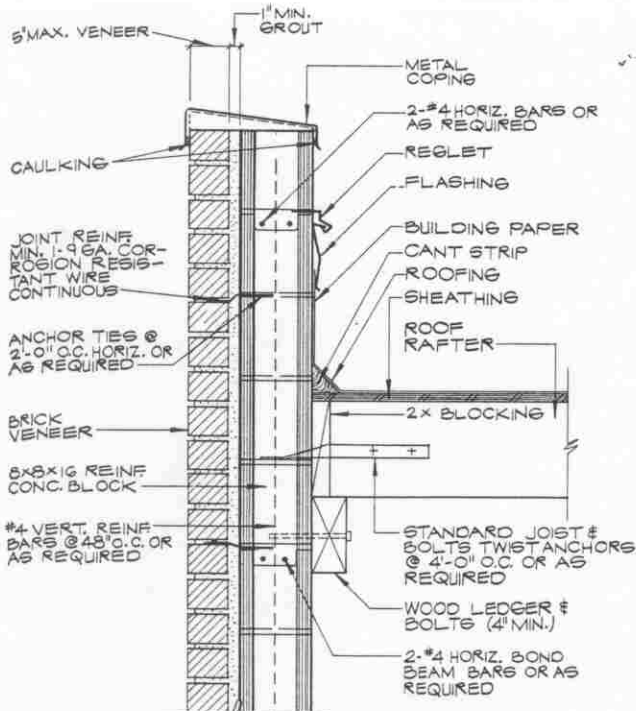
SEMESTER: \_\_\_\_\_

CLASS HANDOUT: \_\_\_\_\_

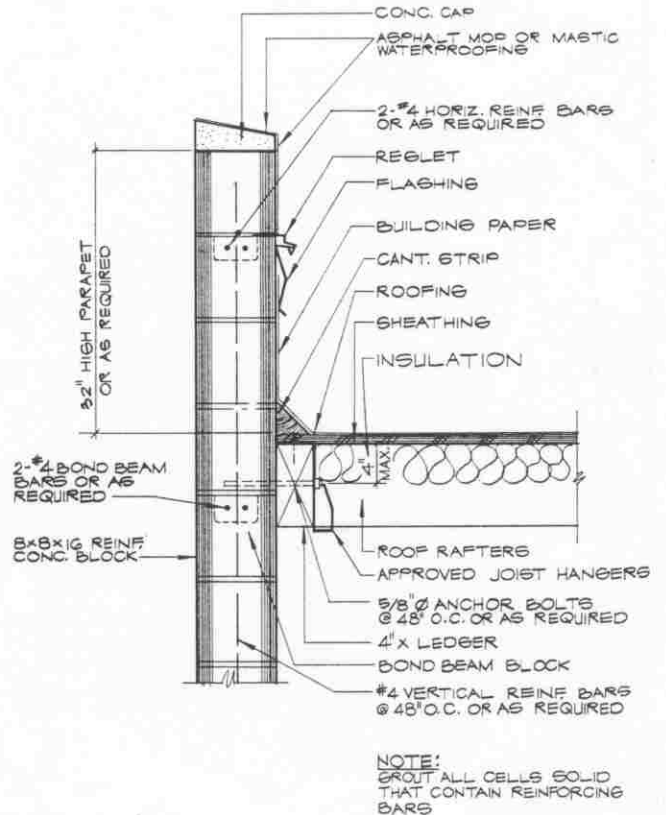
WS-6



## MASONRY PARAPETS



VENEER AT PARAPET  
1/2" = 1'-0"



NOTE:  
GROUT ALL CELLS SOLID  
THAT CONTAIN REINFORCING  
BARS

UNIVERSITY OF TOLEDO  
ENGINEERING TECHNOLOGY DEPT.  
ARCT-1100 ARCHITECT. GRAPHICS

# MASONRY PARAPETS

SEMESTER: \_\_\_\_\_

CLASS HANDOUT: \_\_\_\_\_

WS-7