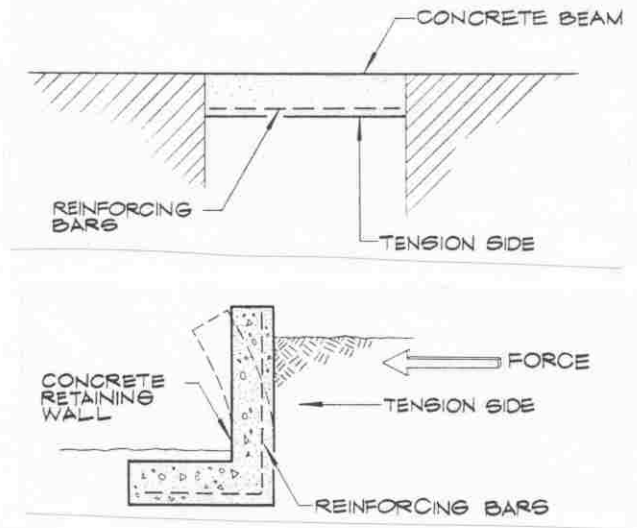
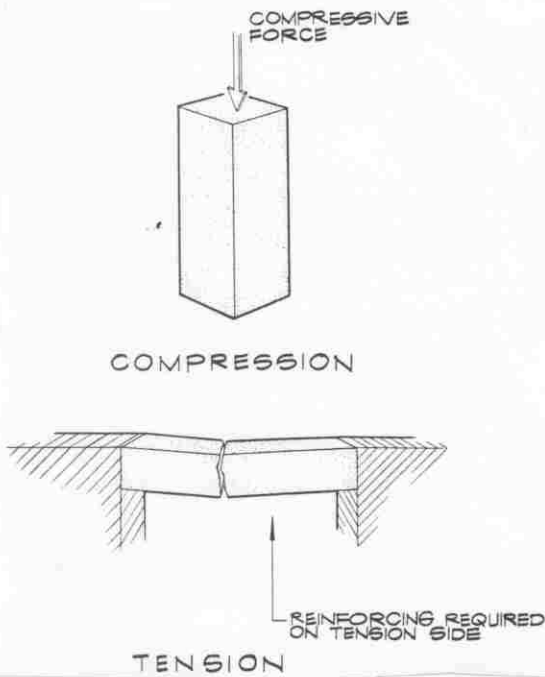
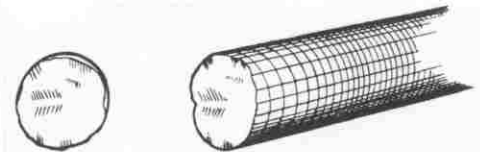


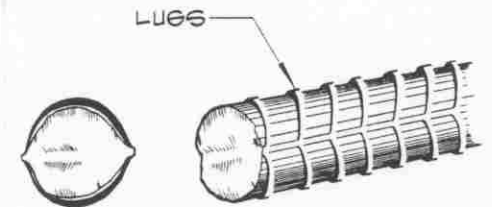
STEEL REINFORCED CONCRETE



REINFORCING BARS



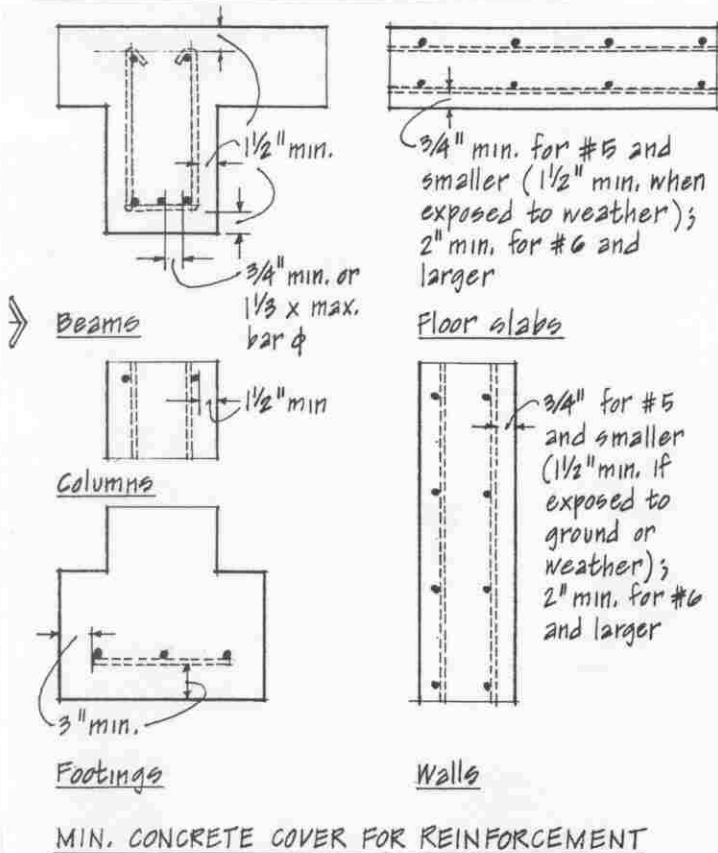
PLAIN BAR



DEFORMED BAR

STANDARD REBAR CLEARANCES

- STIPULATED BY THE AMERICAN CONCRETE INSTITUTE (ACI)
- BAR COVERAGE REQUIRED TO PROVIDE PROTECTION FROM FIRE & CORROSION



#3 bar	= 3/8"
#4 bar	= 1/2"
#5 bar	= 5/8"
#6 bar	= 3/4"
#7 bar	= 7/8"
#8 bar	= 1"

UNIVERSITY OF TOLEDO
ENGINEERING TECHNOLOGY DEPT.
ARCT-1100 ARCHITECT. GRAPHICS

CONCRETE WALL SECTIONS

SEMESTER: _____

CLASS HANDOUT: _____

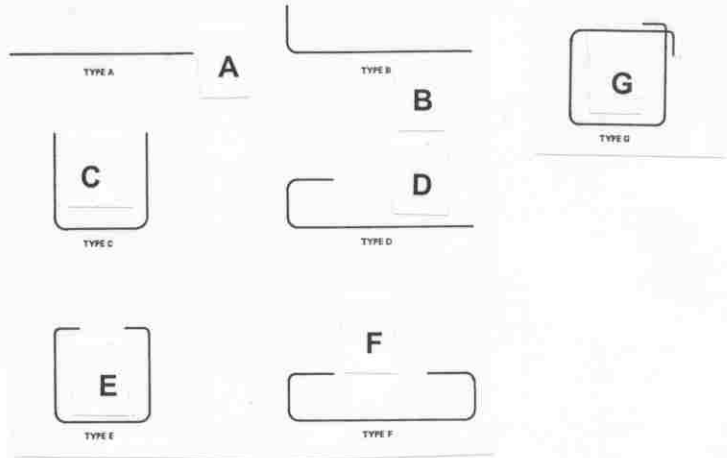
WS-8

DRAFTING REINFORCING

COMMON BENT BARS

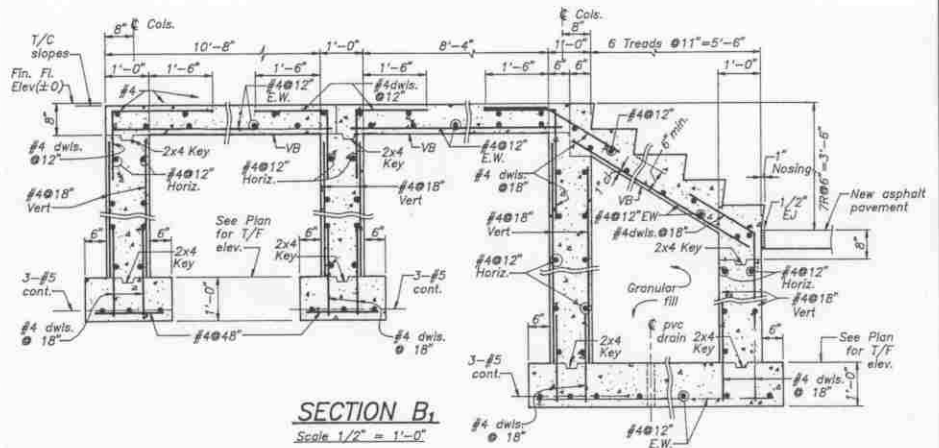
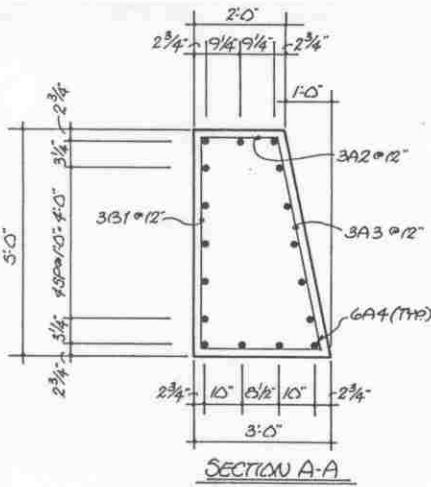
COMMON ABBREVIATIONS

- Bot BOTTOM (AS IN BOTTOM OF MEMBER)
- Bt BENT (AS IN BENT BAR)
- CT COLUMN TIE
- EF EACH FACE
- EW EACH WAY (AS IN BARS SPACED @ 6" ON CENTER EACH WAY)
- FF FAR FACE
- IF INSIDE FACE
- NF NEAR FACE
- OF OUTSIDE FACE
- PI PLAIN BAR
- St STRAIGHT
- Stir STIRRUP
- Sp SPIRAL
- T TOP (AS IN TOP OF MEMBER)

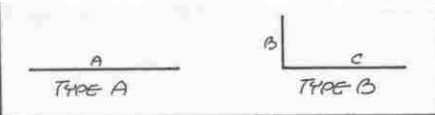


SHOW BARS IN ACTUAL LOCATIONS
 DIMENSION LOCATIONS AS REQUIRED
 UTILIZE STANDARD BAR LABELING CONVENTION

- BAR SIZE & DESCRIPTION
- BAR CODE TO REINFORCING SCHEDULE
 - #A#* WHERE:
 - # = BAR SIZE
 - A = BAR CONFIGURATION
 - #* = CONSECUTIVE NUMBERING
 - #01 WHERE:
 - # = BAR SIZE
 - 01 = CONSECUTIVE NUMBERING



BAR DETAILS AND DIMENSIONS								
BAR No.	BAR SIZE	TYPE	TOTAL LENGTH	A	B	C	D	E
3B1	3	B	7'-4"		2'-5"	4'-5"		
3A2	3	A	1'-5"	1'-5"				
3A3	3	A	4'-10"	4'-10"				
6A4	6	A	49'-9"	49'-9"				



NOTES
 3B1, 3A2, & 3A3 TYPED TO 6A4 @ EA.
 12" SP

UNIVERSITY OF TOLEDO
 ENGINEERING TECHNOLOGY DEPT.
 CET-1100 ARCHITECT. GRAPHICS

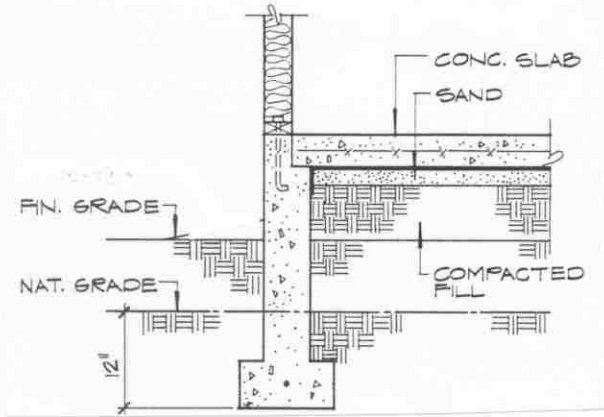
CONCRETE WALL SECTIONS

SEMESTER:

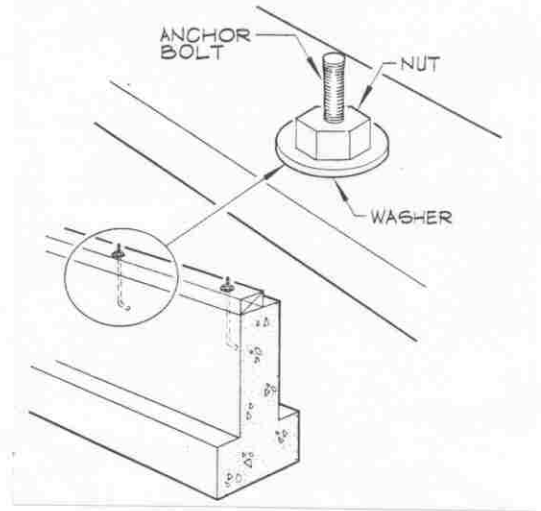
CLASS HANDOUT:

WS-8a

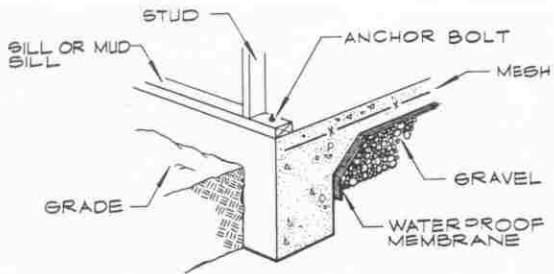
GRADE TERMS



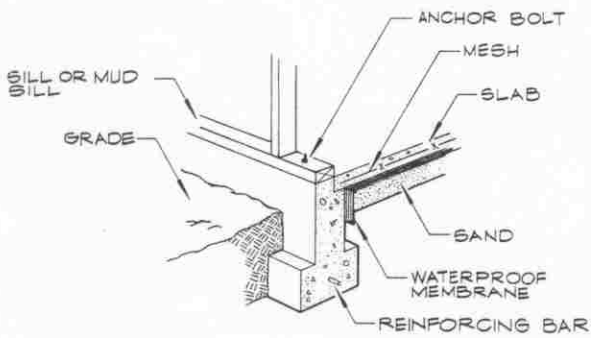
ANCHOR BOLTS



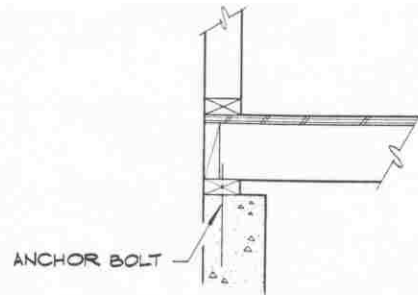
POUR TYPES



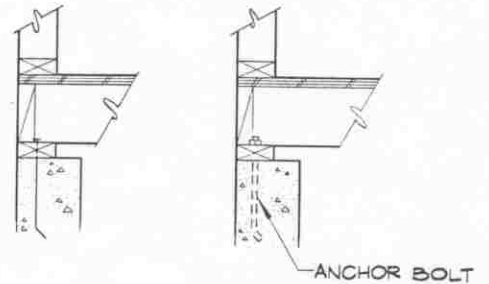
MONOLITHIC



2 POUR SYSTEM



USING CENTER LINE



DRAWING BOLT

UNIVERSITY OF TOLEDO
ENGINEERING TECHNOLOGY DEPT.
ARCT-1100 ARCHITECT. GRAPHICS

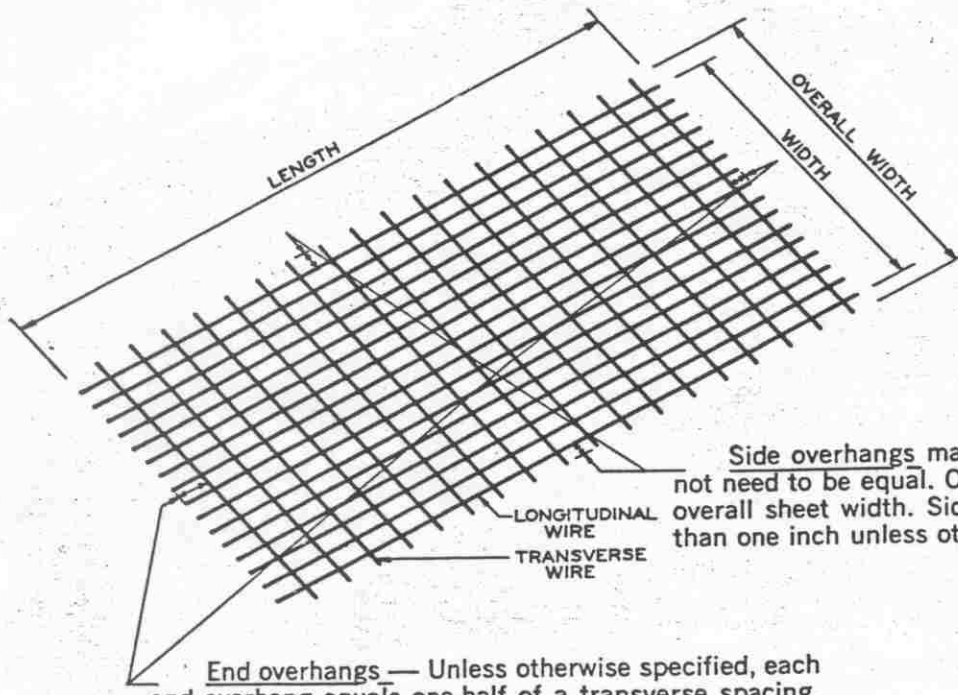
CONCRETE WALL
SECTIONS

SEMESTER: _____

CLASS HANDOUT: _____

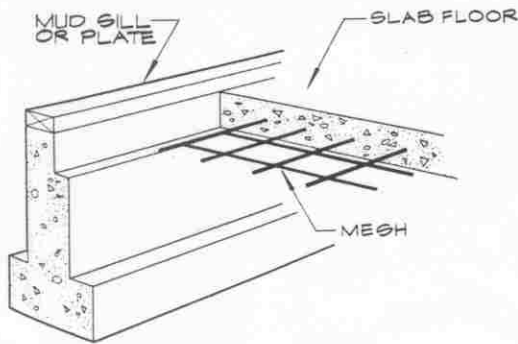
WS-9

WELDED WIRE FABRIC



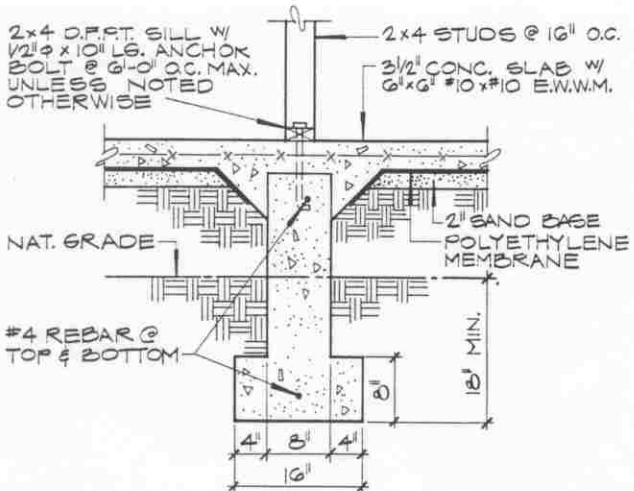
Side overhangs may be varied as required and do not need to be equal. Overhang lengths limited only by overall sheet width. Side overhangs will be no greater than one inch unless otherwise specified.

End overhangs — Unless otherwise specified, each end overhang equals one-half of a transverse spacing.



Industry Method of Designating Style:
 Example — WWF 6x12—W16xW8

Longitudinal wire spacing 6"	Longitudinal wire sizeW16
Transverse wire spacing12"	Transverse wire sizeW8



UNIVERSITY OF TOLEDO
 ENGINEERING TECHNOLOGY DEPT.
 ARCT-1100 ARCHITECT. GRAPHICS

WELDED WIRE FABRIC

SEMESTER: _____
 CLASS HANDOUT: **WS-10**